

2012



TOTAL PERFORMANCE BASS BOATS

We Build Dreams ... It's A Family Tradition!

We Build Dreams ... It's a Family Tradition!



We have entered into our 43rd model year of building Bass Cat Boats. We are thankful every day for the opportunities that life has bestowed upon us. It has been a long time since 1971 and we wanted to share some thoughts on the mark in our lives that many of you have made.

Jan and I have watched this company grow from our garage to the only owner-founded-remaining bass boat company forged from the sunrise of our sport. We were both overjoyed to see our original boat arrive the week of the Owners Invitational this past spring. Never would we have thought it would be in

to lead the pack those mornings.

From BASS ooze offs, started after a Saint John's BASS event on to aerated live wells, 200 rated Pantera's and more, we have left our mark. The innovations in the late 80's and 90's were joint efforts, while the innovations today are all younger perspectives than ours. We have been able to enjoy watching it all develop. Somewhere in the late 90's things rotated.

As it developed, we have enjoyed anglers successes also and watched this come from what we called a "farm club" to a national force in many areas, from those five (5) J.D. Power and Associates awards on ... we help drive this sport. Many times over during these five decades we often worried it was ending, and it never has.

Direct family relationships have been forged here over work. Now, today, we have a true family business which is carrying past where we envisioned it. A business we drop in on briefly, unexpectedly of course and one where time has changed things. Early on, I just enjoyed fishing! From Paul Lingle to Bud Erhardt, Bill Rose, Ron Deardorf, Jim Byler and many, many more friends back then, oh what a pleasure it has been.

From us, we thank you for looking at a Bass Cat and sharing our dream.

Ron Pierce

Good Fishing, Ron and Jan Pierce

The letter above was needed from our parents to characterize our heritage and company as a family business. In the last few years the cover memo has been a collaborative effort from Dad and I both. As time moves on it needed to be said in their perspective. Next year we plan to again enjoin in the cover letter.

In late 2011 we rotated our market as we made our first brand acquisition in Yar-Craft and an entry to

the walleye angling market. This has been a great move and helped tremendously in 2013 to enhance our base within Bass Cat. The volume has been more than expected and helped to keep a much more consistent production with Bass Cat. You can learn more there on the www.YarCraft.com site. Both companies are flourishing and you will see that more in time.

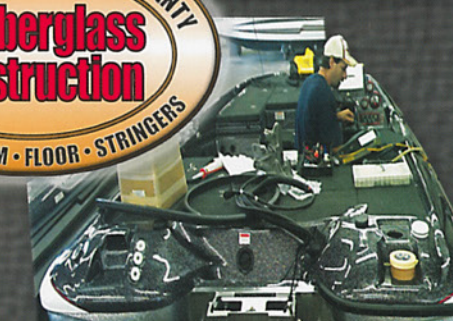
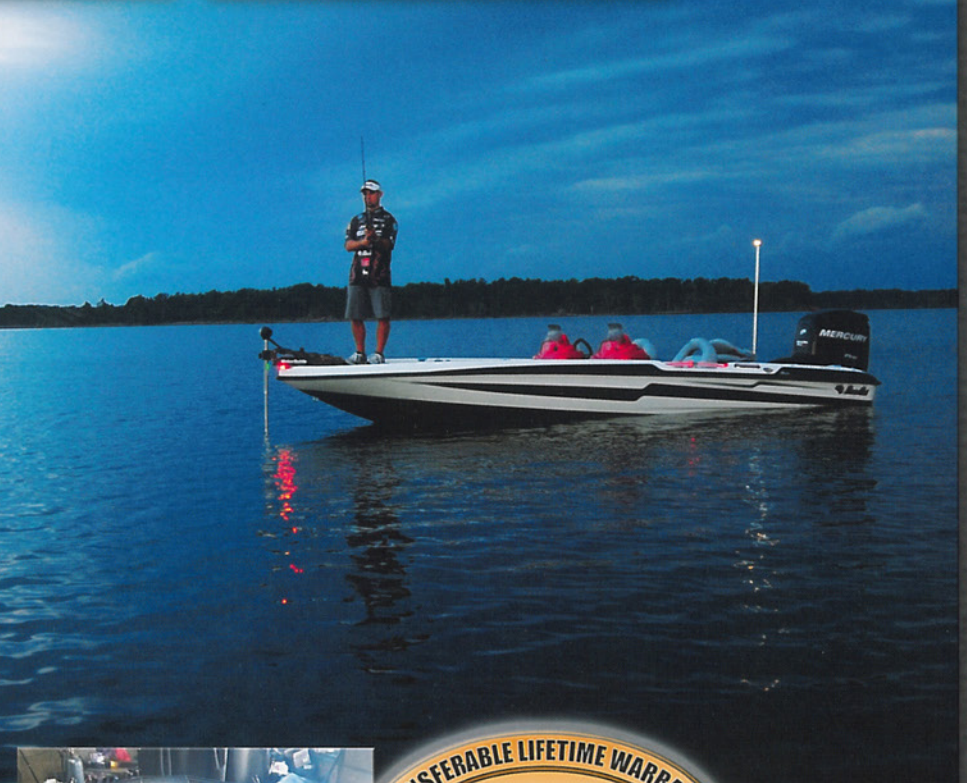
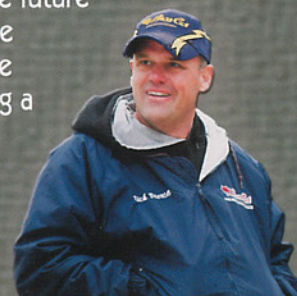
Since the late 1990's we really changed focus starting with the All Fiberglass construction and in 2003 the Cougar FTD moved this trend forward over 10 years ago. Today we have the broadest bass boat line up in the market with more models than any other brand. Obviously every year has brought innovations and new products, now let's briefly list some of the 2013 changes.

In 2013 a new Puma FTD version was designed from the Eyra styling. It has a 2" wider front deck like the new Cougar FTD with finished interior front storages. We also introduced a removable console for many models, and in classic BCB style it is rock solid. This one won't come bouncing at you in rough water. And by boat show season a new "bass" BCB wheel in 18" size is joined with a redesigned tandem fender to match. For 2013 we revised all of the flake and vinyl colors, as well as added a really slick LED backup light option. The vinyl moved our costs up about 100% (2 times) on just the seat vinyl and is a much better product, with more to come there. And we are working to offer a totally different twist in spring that dealers will let you in on.

We have plenty in R & D for 2014 and beyond and we think the future could be lights out. Things are happening here at a fast pace and we appreciate you taking a look at everything we offer.

Rick Pierce

Good Fishin', Rick Pierce



Craftsmanship

Everyone will talk about how well their boats are built, that would be no different. However we don't have to boast as our competition set that bar for us. There is a lot to be said about processes innovated before a few of our competitors were in business. Adding to that, much of our competition has tried to emulate our construction techniques right down to the fiberglass petitions and lackluster attempts at replicating our transoms. They obviously are paying attention ... to us!

The highest form of flattery is said of being copied, we are not flattered and we are not standing still. We intend to give them more to copy like the new strapless cover, removable consoles and more. Today we continue to test resins, offer new colors, improve vinyls and techniques that no other company has the desire, or ability, to extend themselves on. Long ago, we learned one piece construction reigns superior and that is our core. We strive to put quality in our products. Even the drain plug is a twist-in Stainless Steel on our Premium series, we just can't stand the cheap plastic styles.

From our trailers, with US steel to the 15" wheels standard on everything except a Margay, we know quality always shines through. Most of our craftsmen and women have been in this factory building Bass Cats longer than the present production staffs in the majority of competitive brands. Our quality is by far the best ... from Gelcoat to Lamination to Finish ... we care and get downright mad when things are not right.



The Jaguar was an iconic model for Bass Cat. It was set aside in 2005 awaiting a design to rival the impact of the original Jag. This new Jaguar definitely fills the slot, as it is the largest of bass rigs. With a 21' 5" frame, it dresses up real well for engines from the massive 350 Verado to the chosen 250 models. It is a pick-your-poison-do-it-all rig that exudes luxury, with a ride unparalleled. The 7" deeper bow rise, on this hull, is more than any other model and eats the water. A Jaguar is the only boat for those who share the passion to have the best. It truly is the last boat most will ever own.

This model has storage areas innovative to bass fishing as the scissor storage system allows up to 16 tackle boxes in slide out trays (8 STD.), then forward of that are box trays which secure another 10 to 12 tackle boxes. No other bass rig with this much efficiency in a modular system, and what else would you expect at the top of pride. Behind the net scabbard are two frontal offset hatches. A 34-quart cooler resides at the deck step, with sandwich tray inside. Beside that is helmet storage that will accommodate two (*2) full-face helmets. A tool bar holder sits to one side of the step area. Of course, you have dual rod boxes which are huge and the a Port side tackle shelf for those baits you toss aside. Both forward and rear deck seating positions for

the variation of seating, and a slot exists for those handy buoy markers.

The cockpit is just that, with rear view mirrors to boot.

The fairing-style console with cafe' windscreen is massive and the passenger console (opt.) is smaller to allow this rig to fish like a single console boat. Your passenger even has a neat access door to a large side storage. Most everything is standard on the Jag', including a SONY Stereo with USB port for your digital music, so plug in! A walk ramp down the port side allows move from front to rear with ease. The seating has recesses for throw items and the fire extinguisher location, with center mounted cup holders.

Decks extend to just over 6' wide at the front deck and the back deck is even larger. Plus, you have a storage to place a spare trolling motor. The passenger has a private-side storage and a port rod box for 7' rods in the back deck. Couple this with a storage for your spare propeller and the oil tank and your set. There is nothing not thought of on this rig, right down to the collapsible telescoping ladder for pleasure or safety.

We wanted to build a rig that exudes elegance and exceeds expectations of luxury, and we think we have.

Specifications:

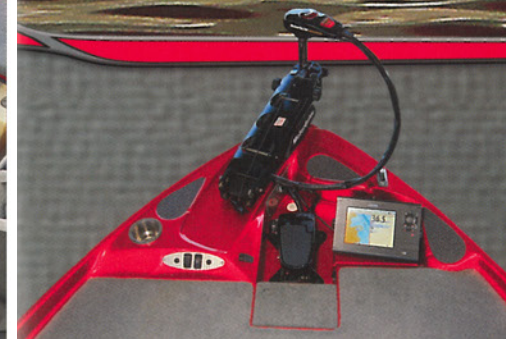
Length 21'5"
Min. Storage Length 26'5"
With Swing Away Tongue ... 23'9"
(Add: 4" for Yamaha Outboards)
Beam 94+"
Approx. Wt. 2150 lb.
Fuel Capacity 53 Gal.
Max. H.P. Range 250-350



New Premium Seating for 2013



Boat Driver: Kevin Short
Boat Color Shown: CO838





Since 2003, we have been on an innovation tear, opening fresh eyes to Bass Cat. The redesigned Puma FTD stretches out with the latest revision in today's popular model. Everyone knows what the Puma brought in 2005, this new Puma FTD enhances that. The 20' hull got a facelift in 2011 with the BCB stripe softened and "mini bolt" added to the evolved 20' 4" frame. Performance expectations of the Bass Cat "Family" are lofty and we think we have accomplished that with more than just a growl in this throaty bass rig.

In 2013 we inserted a wider casting deck that everyone will enjoy. We just bumped that 5' by 5' (5x5) deck up a few inches. It's not too large of a deck to be a nimble platform, as front decks are work spaces. The bow has to move into tight



spots with efficiency, from Ozarks boat docks to Sam Rayburn thickets, it should have no problems. And still is broad enough to fish the open water of Lake Erie.

The layout provides storage in the front of the console with seven (7) compartments, and 11 storages total, including a scabbard for your dip net. BCB models are tools right down to the flip up mooring cleats for docking, the only gimmick is the lighted LED acrylic hand rails which are just plain cool!

We can go on and on about access to pumps, simple fueling and more. Go experience the efficiency of a Puma FTD and understand the attention to detail others overlook, as everything has a reason. Sure, it's simple stuff, though it is simple stuff that matters to you in that world of competitive angling.



Specifications:

Length 20'4"
 Min. Storage Length 25'6"
 With Swing Away Tongue ... 23'0"
 (Add: 4" for Yamaha Outboards)
 Beam 94"
 Approx. Wt. 1825 lb.
 Fuel Capacity 52 Gal.
 Max. H.P. Range 200-300



Optional Hot Foot With Sliding Base



Southco Latches



New Seating With Style and Outstanding Support for 2013



Boat Driver: John Crews
 Boat Color Shown: V1121



Cougar FTD

The Cougar FTD model began a wave for Bass Cat after the 911 era, as a crushing blow decimated many competitors. The wave started with the Full Team Deck model that continues on its third version. It shares the proven 20' 4" hull that has also been developed over time. The front deck on this latest design also had a couple of inches added to the beam for the perfect platform to pitch and cast from, with plenty of room for rods on each outward side.

This was the first of the triangle live wells and in 2011 received the latest styling trend and some neat tweaks. The console is clean and comes with either cafe' or large windscreens and will accommodate the 1198 Humminbird or the HDS 10 Lowrance.

This newest model has gel-finished interior compartments in the center with an integrated net slot for optional net storage. Inside the forward box is

an integrated day box, under a shared lid, to place all of your days tackle. It keeps you from digging or wasting time to find those three go to lures on tournament day. Rod storages are on both sides and hold those 8' models many will not. And you won't have to move your rods to access your tackle as the center storage is a proven tournament layout. In the 2013 Cougar you have twin fuel tanks aft as does the Puma FTD. There twin rear storages and dual coolers in the deck step and under seat, where you also have under seat storage.

Of course all in BCB flare with no plastic dashes or covers for large hole cuts. Each gauge is individually drilled, as we have done for decades, eliminating the loss of strength in your dash to enhance durability. The Euro-style buckets received a nice change in 2013 as we redesigned the look and quality of vinyl. Overall, this Cougar FTD has been a solid performer in 2012 and we think it will continue to be a tournament predator in 2013.

Specifications:

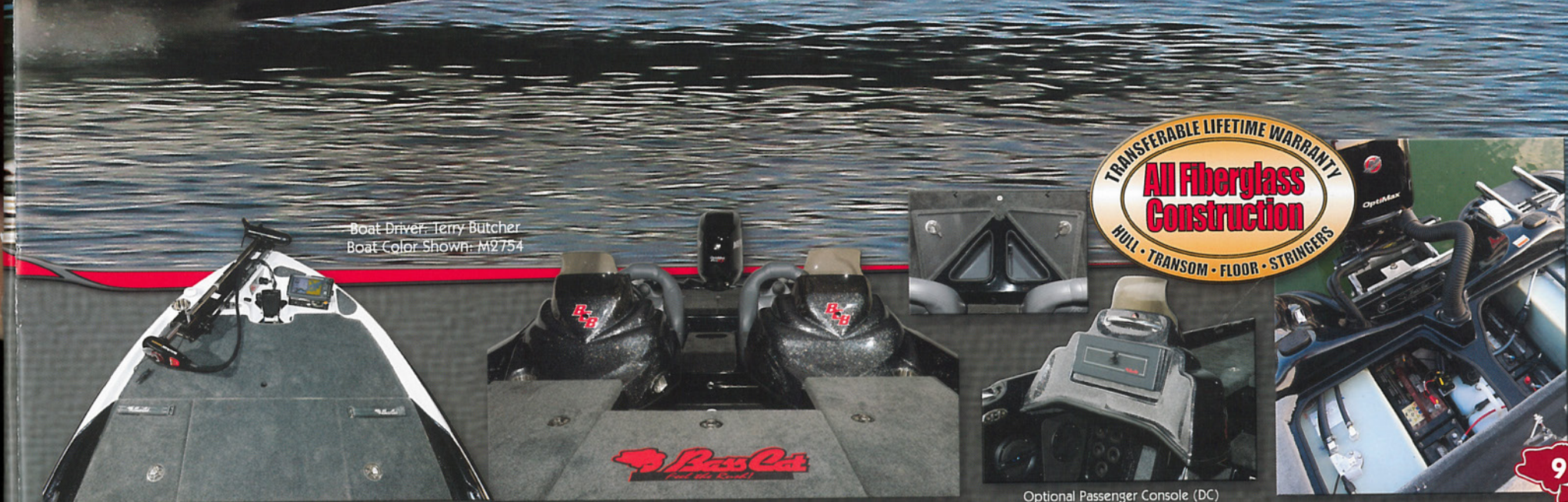
Length 20' 4"
Min. Storage Length 25' 6"
With Swing Away Tongue ... 23' 0"
(Add: 4" for Yamaha Outboards)
Beam 94"
Approx. Wt. 1805 lb.
Fuel Capacity 52 Gal.
Max. H.P. Range 200-300



Optional Sony Stereo with iPod, and iPhone Links



Boat Driver: Terry Butcher
Boat Color Shown: M2754



TRANSFERABLE LIFETIME WARRANTY
All Fiberglass Construction
HULL • TRANSOM • FLOOR • STRINGERS

Optional Passenger Console (DC)

Eyra

Wow! This is all some say when they see the beauty in the lines of the new Eyra. The Eyra was a model which set the trend for the rounder designs of the 1980's and 90's and this design is no different. Much like the Jaguar, the Eyra was sidelined until the design deserved the innovation respect of that first Eyra. This model has earned the name as an award-winning bass boat with styling that is quite unconventional. A new 20' 2" hull was designed to allow the Eyra to perform from a 200 to a 250 with pizzazz or performance, thus being labeled a bridge boat.

The side cowl scoops for venting bring out the muscle car days of the Mustang, Cobra, GTX, GTO, Camaro and Cuda, as lines on the boat include inlayed fish on the outer deck panels, forward of recessed deck corners, to prevent dock rash. The hull has inlays for concave inserts as does the deck. There is even a panel inlayed to hold your registration numbers. Not much was left out in styling and the layout is also unique. The cockpit is tighter and lower to bring the driver down in the boat and give a more secure feeling, as the potential is soon understood once you throttle up.

Coffin opening center doors run in line to the rod boxes and they have a notch chock for tackle boxes to stand on edge, separated by the net trough in the center compartment. The nimble hull is quick to impress, as it carves the turns with ease and clicks by your friends on a brisk morning. Triangle live wells are the massive replicas of the FTD line and the aft storages resemble those models also. The rear access is quite different, as there is a special place for a tool box and oil tank. The introduction of the prototype at the 2010 Classic was overwhelming in positive comment and it was Trailer Boats most innovative design in 2011.

The Eyra is truly a work of art and there is not enough space here to fill the niceties of the Eyra, it niches itself well.

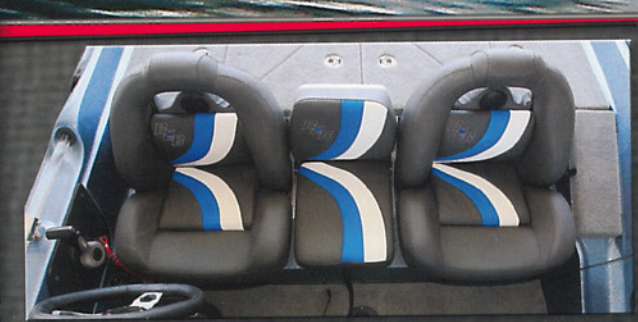


Specifications:

Length	20'2"
Min. Storage Length	25'0"
With Swing Away Tongue ...	22'5"
(Add. 4" for Yamaha Outboards)	
Beam	94"
Approx. Wt.	1715 lb.
Fuel Capacity	52 Gal.
Max. H.P. Range	175-285
*Special Order Hull	*300



Boat Driver: James Niggemeyer
Boat Color Shown: B0906



Puma

The Puma is a floor plan which really enhances the ride with a more forward-oriented weight and a bit more weight in the right areas. The front floor plan was first started on the niche Pantera IV and evolved over to the Puma with the front net scabbard. They share a very similar layout. Fuel tanks are both under the seat and one in the rear for a total of 43 gallons. On the front deck the net scabbard and individualized storages give you a nice way to keep your tackle sorted. It also shares the Premium cafe' consoles and the

20' 4" hull.

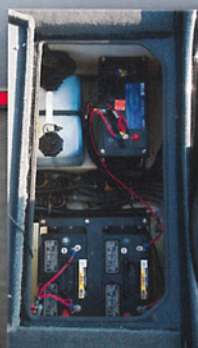
This model is a preferred design in river conditions, and what we term as "flat water", which means those skinny water conditions where many boats cannot tread water. The balance can be moved around to fit your preference and you can also add a 10 gallon optional fuel tank to bring along 53 gallons on your tournament day runs.

The live wells are basic BCB with large wells and good depth, which keeps those critters alive well into a hot summer day. If your into a nice floor plan, shallow water and larger rear storages, then you should give the Puma some consideration, as it meets the needs of many, and will for years to come.



Specifications:

Length	20'4"
Min. Storage Length	25'6"
With Swing Away Tongue ...	23'0"
(Add: 4" for Yamaha Outboards)	
Beam	94"
Approx. Wt.	1835 lb.
Fuel Capacity	43 Gal.
Max. H.P. Range	200-300



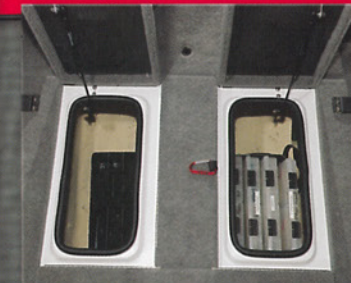
Rear Storage Provides Easy Access to Batteries, Oil and Pumps



Optional E-Ladder Mounts to Jackplate



Passenger Rod Bungee



Boat Driver: John Crews
Boat Color Shown: P1075



HULL • TRANSOM • FLOOR • STRINGERS

Cougar

ADVANTAGE

Every company needs a boat that cuts a switch, changes the horn, eases back on pumps or changes, somehow, to make a more affordable product. This best describes the Cougar Advantage model. It is a better buy than most any product out there today. When teamed up with a 225 engine, you can save on the price tag and pass many bruising their ego's and that of their 250 hp engines. The Cougar Advantage is all most any angler would need for going fishing and it focuses on

those club level family anglers who spend a day on the water Saturday and are back at work on Monday, after Sunday church of course. This model only comes as a package version with engines attached as we strive to make every agreement count to put it in your garage at a price you can afford.

Every aspect of the construction is Bass Cat through and through with that same attention to detail. Little things like White Cap locks instead of Southco and plastic grated horns instead of stainless directionals are examples of differences in the equipment on this model. The fuel is 36 gallons with a 26 on one side and 10 gallon tank on the opposing side. Of course, you can option many of the items that are on the Premium packages.

If you are stretching to find that big rig with a position all its own, then you should check out the new Cougar Advantage package.



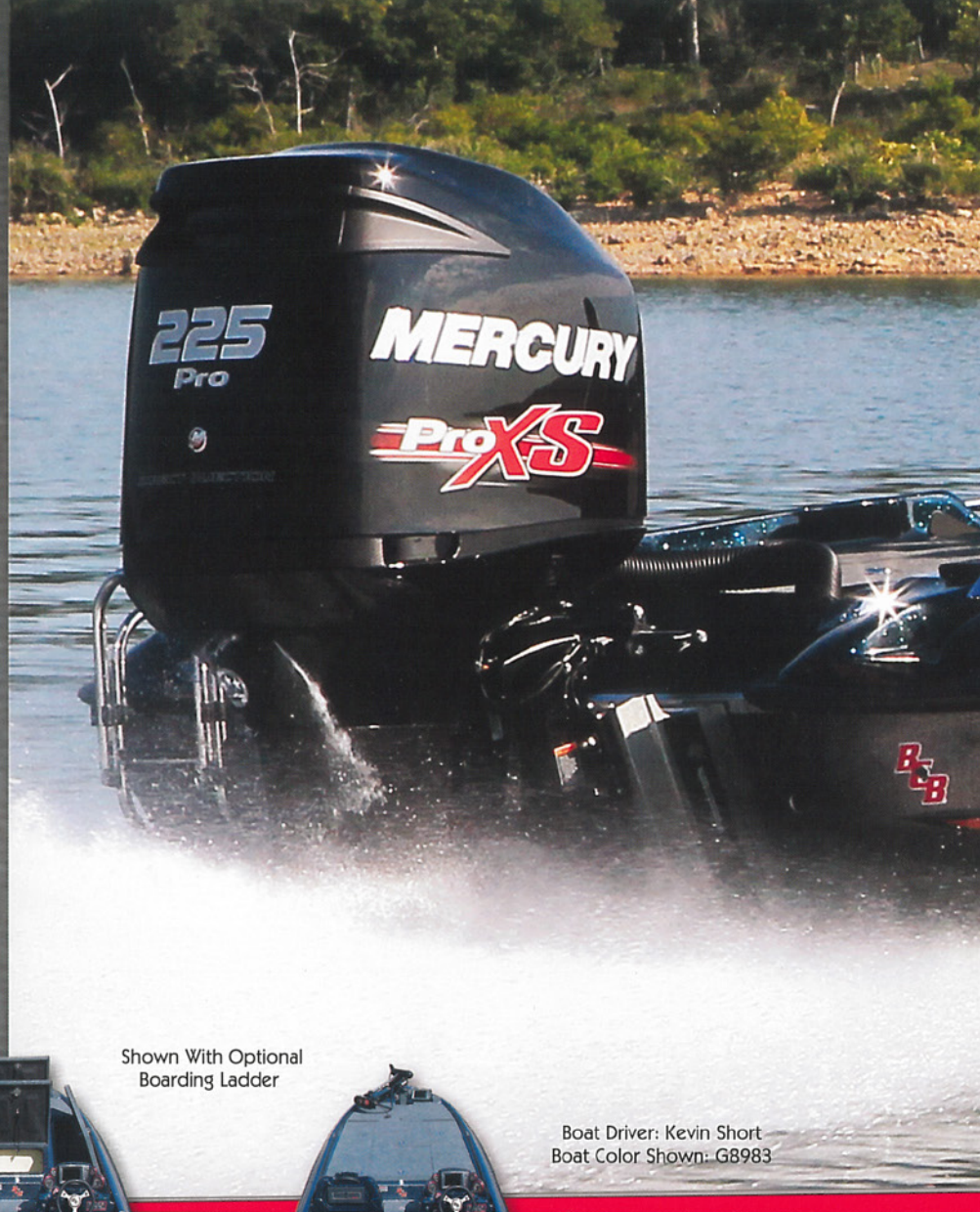
Specifications:

Length 20'4"
 Min. Storage Length 25'6"
 With Swing Away Tongue ... 23'0"
 (Add: 4" for Yamaha Outboards)
 Beam 94"
 Approx. Wt. 1835 lb.
 Fuel Capacity 36 Gal.
 Max. H.P. Range 200-300



Shown With Optional
Boarding Ladder

Boat Driver: Kevin Short
Boat Color Shown: G8983



Pantera IV

There is little that we can say about a Pantera IV that cannot be said better by those who have owned one. This model has owners who are very fond of the experience. As a large 19' 5" model, it is very close to being able to accommodate a 225, that was not to be, as BCB felt that the gap was too tight to allow this model to have more than a 200 in pricing. They preferred to look out for the expense and save the home account some cash in a wonderful platform. As

you will read in the Puma this is the first floor plan with the integrated net scabbard and overall deck layout the Puma made famous.

From the 6x Italian steering wheel to the large storages in the decks, one will find the most convenient 200 rated model in the market. It is roomy throughout and the hull allows it to carve into waves in a manner the competition's 20' models will envy at weigh in. It simply does many things well, as its owners will tell you! So well it has been untouched since it was introduced in 2004.

Fuel is a standard 33 gallons, with options for more, and the equipment is the Advantage group which has the option of moving up to the Advantage Elite group for interior lighting, security system and more. The earlier description said it was like a "piece of clay... molded in the perfect 19' bass boat." If your after the best in a 19' boat and a 200 hp engine we think, after trying one, you will agree.



Specifications:

Length	19'5"
Min. Storage Length	24'5"
With Swing Away Tongue ...	21'8"
(Add 4" for Yamaha Outboards)	
Beam	94"
Approx. Wt.	1605 lb.
Fuel Capacity	33 Gal.
Max. H.P. Range	135-200



Optional Sony AM/FM/CD Stereo with iPhone and iPod Links



Boat Driver: Billy McCaghren
Boat Color Shown: N3179



Optional Battery Chargers



Pantera II

The Pantera just might be the most iconic model in bass boats. In 1988 it boosted Bass Cat through the recession of 1990 -1992. Literally being scooped up as they got unloaded from the trucks with a waiting list not rivaled today. This newer version has a lot of expectations to live up to while the market changed it is now sliding back to the efficiency and affordability the Pantera II brings. At 19' 1" in length little has changed in the frame and for good reason. This is one

of the most efficient and quick boats on the market in any classification.

Dual rod lockers sit outwards of two storages and the cooler is really neat with a sandwich tray alongside the ice chest. The decks are ample and the performance is enhanced by all things that have been designed into the slender appearance that will tackle most any water out there. The Pantera II is not a compromise boat and still is much like the days of Dave Fenton's late 1980's and 90's pro career. It earned a reputation and will offer most any angler all they truly need for a competition day. Bump it up to the optional 43 gallons of fuel and you will be good to go with a 200 sitting right alongside most 250 engines miles down the lake.

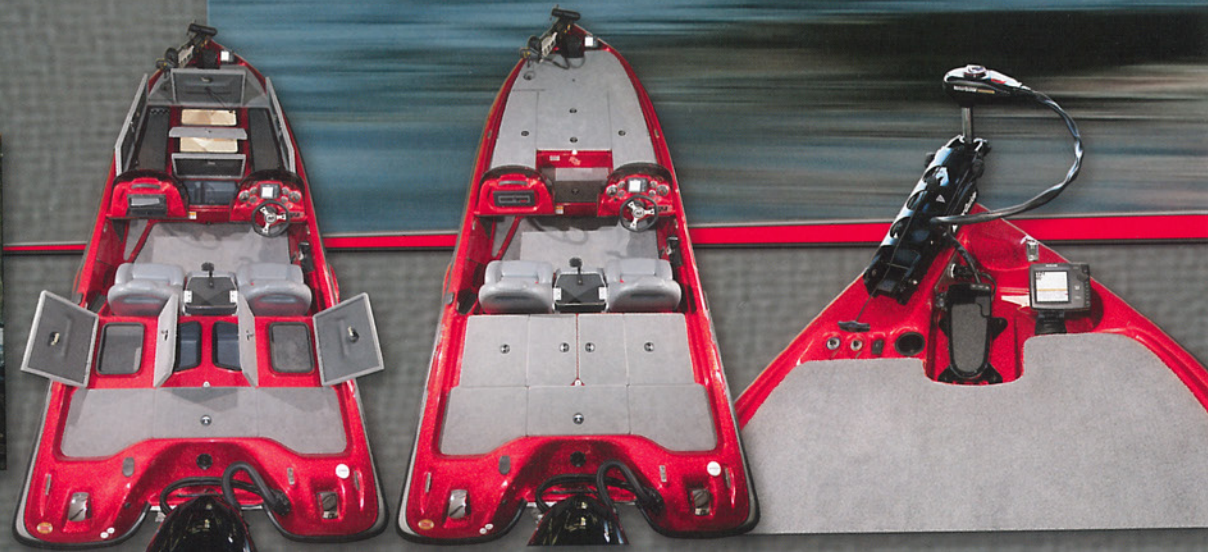


Specifications:

Length 19'1"
Min. Storage Length 24'3"
With Swing Away Tongue ... 21'7"
(Add: 4" for Yamaha Outboards)
Beam 93"
Approx. Wt. 1425 lb.
Fuel Capacity 33 Gal.
Max. H.P. Range 135-200



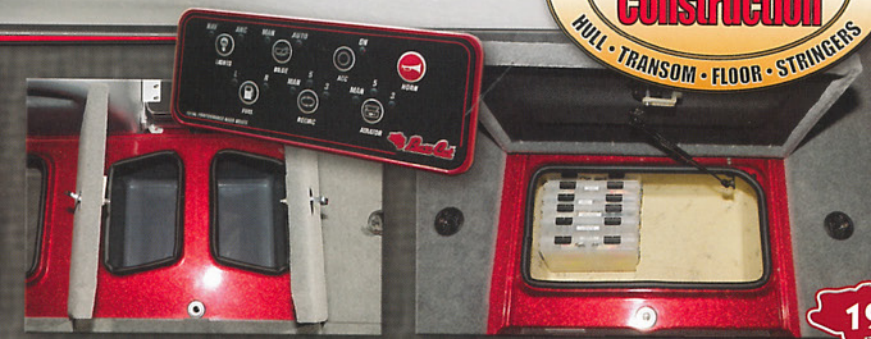
Optional Power Pole(s)



Boat Driver: James Niggemeyer
Boat Color Shown: S9981



Optional Passenger Console (DC)



Pantera

Classic

We listen to fishermen. This re-designed Pantera Classic hopefully will fit those anglers who find the 19' bass boat fits their desires by providing exceptional "big boat" performance and handling in all types of water conditions. The "all fiberglass" vacuum compressed hull, stringers, and transom offer a superior rough water ride and long term durability. A Lifetime Transferable Structural Warranty lets this Bass Cat Owner know he has a very high quality crafted product!

Dual rod boxes, a mammoth front

deck storage box, and two (2) large storage boxes on the rear deck provide storage for both the owner and his partner. A center line trolling motor pedal basin, plus a new modular console that allows for an optional built-in digital graph/GPS, aerated and recirculating livewells, 33 gal. fuel tank, and aluminum lids are just a few of the standard features on this new Classic.

A modular console (DC) Classic is also available for those who want to offer added protection for a partner, or just prefer the looks of dual consoles.

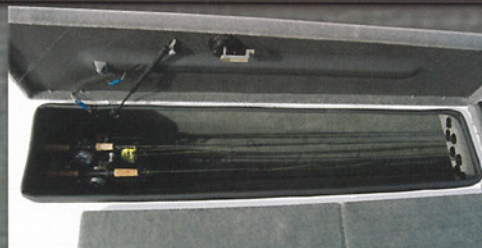


Specifications:

Length 19'1"
 Min. Storage Length 23'11"
 With Swing Away Tongue ... 21'3"
 (Add: 4" for Yamaha Outboards)
 Beam 93"
 Approx. Wt. 1245 lb.
 Fuel Capacity 33 Gal.
 Max. H.P. Range 115-200



Boat Driver: Britt Myers
 Boat Color Shown: Z6841



Optional Rod Box Organizer



Optional Flipping Deck Insert

Optional Padded Center Seat



Sabre FTD

When you look at a Sabre FTD you tend to compare it to bargain boats and it is *no* bargain boat. You can updress this model with the Advantage Elite package and nothing falls short as it is a package for seasoned anglers. So much so that the earlier generation, 18' hull, was preferred by Sam Rayburn legend, Robert Tucker, when he competed on big water going on to a pro level Top 100 victory at Lake Martin. As a first boat in your garage, you give up little with this rig. Team it up with one of the new four strokes and you have a rig that will outlast any payment plan you choose.

The Sabre FTD was brought out to enhance the market trend to smaller rigs in a time we saw an economy beginning to wane. Many anglers have slipped back to this top end 18' rig and 175 for their choice. All while they continue to fish and seek a lighter more easily maneuvered rig, which has fuel mileage matching their needs today with performance just behind that of the maxed-out Pantera II. This is not an inexpensive starter, though a boat with all the materials and construction techniques of the Jaguar in an 18' package. The floor plan closely resembles the Pantera II and they share many of the same storages in layout and size. This is a sleeper in the BCB line and one hard to find as a used model on the street for good reason.

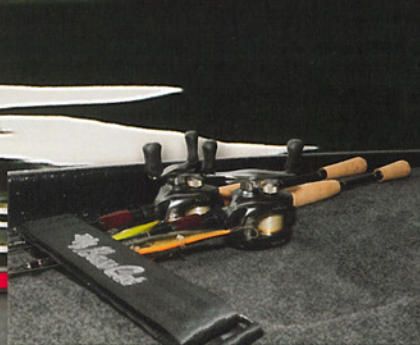


Specifications:

Length	18'1"
Min. Storage Length	22'2"
With Swing Away Tongue ...	19'8"
(Add: 4" for Yamaha Outboards)	
Beam	93"
Approx. Wt.	1215 lb.
Fuel Capacity	33 Gal.
Max. H.P. Range	115-175



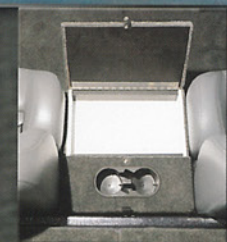
Ruler Storage Under Console



Deck Recess Helps Cradle Reels



Boat Driver: Billy McCaghren
Boat Color Shown: T9873



Optional Carpeted Stern With Storage

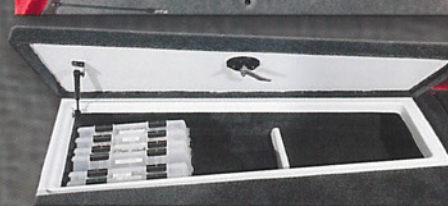
Margay

Our reach into the efficiency priced market was again visited in 2012 as we built a new Margay with a price tag and construction technique no one has in any boat. The innovative design features center rod storage in a box large enough the kids could play in. Here your rods (10 slots) rest above a tackle storage area and outwards are two smaller storages for your choice of other items. The rear deck is large and offers a storage for your partner, as well as tool tray for you to stow gear. Couple this with the large under-seat storages (2) and you will not be short for space. This boat is at home as a retirement crappie cruiser or for a first rig to visit the local tournament scene. It's all in how you want it. Plus, it has the all-fiberglass hull and new construction techniques to minimize shock and give a soft ride in a big bodied 17' 7" rig.

The fishing deck has the traditional 5' x 5' bow and the beam is appreciated by the variety of anglers for all reasons. There is no compromise on the business end of this model. The hull has some neat tweaks to allow

engines from 70 hp to the top end 150 four strokes. Just take your pick and price them according to fit your budget. The dash will hold all the way up to the massive HDS 8 and 998 units and has the options of switches or touch pad, which is standard on the Vision Tour group. This model comes with our preferred dual cable steering, or you can bump up to hydraulic. It comes standard with a 3" frame and pivot tongue with the option to move on up to a 4" tandem if you so prefer.

No matter your preference it will work for you. Just like it has for anglers on the MLF show (Outdoor Channel) as Mike Iaconelli competes in this rig. Sharing a small sponsorship with another boat company. Pick your choice with the Margay, go big and



make it your first tournament vehicle, or make it your choice to spend a relaxing day dunking minnows and crickets. It will handle either task with ease and give you the safety, ride and function at a price others work hard to beat.



Optional Dual Console Available for 2013



Specifications:

Length 17'7"
Min. Storage Length 19'4"
With Swing Away Tongue ... 18'8"
(Add: 4" for Yamaha Outboards)
Beam 90"
Approx. Wt. 1175 lb.
Fuel Capacity 26 Gal.
Max. H.P. Range 70-150

Fisherman: Billy McCaghren
Boat Color Shown: D0801



Yar-Craft allowed us to drift over on a project and double team the 186 FSX with some twists and a Bass Cat stripe. Thus reintroduced was the Calico. The Calico hull will knife through rough stuff in this proven performer. It will leap on plane with ease and cruise along providing a relaxing day on the water.

From the swim ladder to the ski locker you have room for toys and seating up to six (6) behind the windshields. Then on those early mornings Dad can jaunt out to the big water and troll for Walleye and Musky. Everything is there for both uses and the ride is almost unbelievable.

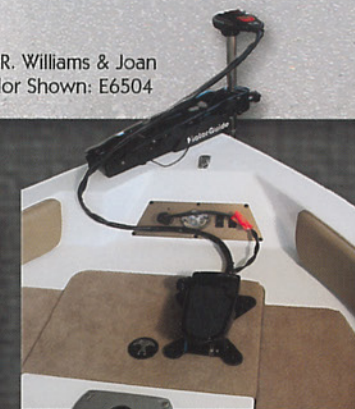
Specifications:

Length 18'6"
Min. Storage Lgth 19'4"
W/Swing Away Tongue 18'8"
(Add: 4" for Yamaha Outboards)
Beam 99"
Approx. Wt. 2100 lb.
Fuel Capacity 34 Gal.
Max. H.P. Range 150-200

Calico



Driver: J.R. Williams & Joan
Boat Color Shown: E6504



Trailers

Most people take the trailer sitting under that shiny new boat for granted ... but we take our trailers very seriously. Unlike many manufacturers, Bass Cat builds Bass Cat Trailers ... one at a time, to fit the specific hull design of each model boat. Every member and cross support is jigged, fitted and welded in U.S. Steel to exact tolerances ... there is zero adjustment on a Bass Cat Trailer. Axles are also jigged, and welded in a pattern weld to assure minimal tire wear from caster to camber, and supported with a multi leaf trailer spring. Each trailer is painted and carpeted to perfectly coordinate with the boat.

Innovations as the newly designed Grab Bar and Step System, and absolutely the finest Swing Away Tongue, all make life at home and on the road a lot more convenient for Bass Cat Boat owners. Also note our Torx Rubber Axle provides a true "Soft Ride Suspension." Our innovative Optional GatorHyde™ coating provides a heavy rubberized protective clear coating which helps repel harmful impacts from rocks and other road debris.

At Bass Cat, your safety and the investment you have made in your boat are not taken for granted ... we demand the highest quality materials and hand craftsmanship, for your safety and security ... it's a Bass Cat family tradition.



Choose From Three (3) Optional Aurora Custom Covers ... Super Quick, and, Easy Installation



Standard Beadlock



Optional Shooter (Availability Pending)



Optional Cat Wheel



Optional Spare Tire Aquilon Cover



Boat Buckle Retractable Tie Downs



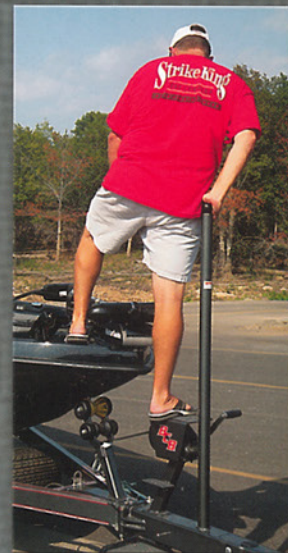
Optional LED Back Up Light (s)



Optional LED Trailer Lighting



Torx Rubber Axle ... A True Soft Ride Suspension!



Our Grab Bar & Step System make entry from the trailer to boat safe and simple. Also available as an aftermarket "add-on" for older trailers.



The Very Finest Swing Away Tongue



GatorHyde® Rubberized Coating Helps Protect Against Road Debris

For a complete listing of Clothing & Accessories, check out our BassCat.com Internet Store!

www.basscat.com

Call us: 870-481-5135
8:00am - 4:30pm (CST)
Monday - Friday

- All Items Subject to Availability and Price Change.
- Allow 4-6 Weeks for Delivery.



Custom Sandwich Caps \$12.00
• 100% Cotton • Velcro Closure



Baywatch..\$75.00 Youth \$65.00

- Med Wt 100% Nylon Toughlan® Shell • Wind Proof • Water Resistant
- Sizes: S-3XL (All Colors), 4XL, 5XL, 6XL, Tall: LT, XLT, 2XLT, 3XLT, 4XLT, 5XLT, 6XLT (Colors: ^) • Youth Sizes: S-XL (Colors: *) • Colors: Black^*, Navy^*, Royal^*, Maroon^*, Forest Green^*, Red^*, Purple^*



Life Vest by Mustang ... \$90.00
100 MPH Vest • Fleece Lined Collar • 500D Cordura • Air Soft Foam creates a comfortable fit • Sizes: S-3X



Key Chain \$3.50



Throw Cushion \$19.99



Coffee Cup \$10.00
• 16 oz.
• Dish Water Safe



Fishing Towel \$9.00
• 16 x 23" • Brass Eyelet w/ Belt Clip



Reflective Cap \$15.00
Twill structured • Blk w/ Silver Reflective Visor • Velcro Strap w/ D-Ring



Camo Cap \$12.00
Camo Twill Structured • Medium Profile • Velcro Closure



Hooded Sweatshirt \$29.00
• 45% Cotton, 55% Polyester



Vive Sweatshirt \$49.00
• 80% cotton / 20% polyester

Owner's Invitational



It's April 4, 2013 and dawn is on the horizon. Imagine the sight of 500 to 800 bass rigs bobbing in the drink of sunrise. That is what the Owners Invitational has long been. For 2013 there is big news as the Family Reunion takes a new twist in a move to Sam Rayburn reservoir, out of Rayburn Country and Jasper, Texas. For 25 events, over 26 years, we had a homecoming in Mountain Home, Arkansas and now we are stretching out to bring this event to Texas and seek the paramount this event has always been. This year the event moves to Thursday April 4th & Friday April 5th, after a poll determined mid week was where many Bass Cat owners preferred the event to take place. This should give us a bit more room to move around on that mammoth reservoir, spanning across almost 115,000 acres of pool. Grass to wood and ditches you have all the character you would want here.

From Wild Card to drawings and fish awards that set a World Record in the Ozark Bass (pending) category

last year, we hope to bring that enthusiasm to the East Texas pine trees as the sand bottom of Rayburn will bring a whole new face to the anglers that travel once a year to visit with friends and family they seldom see. While the traditional format may change some, the intent of the event will remain focused on the appreciation we have for the Owners of Bass Cat boats across the USA and other countries. We hope all of you join us at Rayburn and make your reservations now, as things are filling up fast!

We hope to see you here with your new ride on April 4th! We promise it's unmatched by any tournament anywhere. It's a Family Reunion!



Warranty Extended Lifetime Transferable Structural Warranty

Bass Cat Boats warrants each new fiberglass boat to its original noncommercial purchaser for a two (2) year period. Warranted to be free from defects in the workmanship and materials, under normal use and conditions. Certain items are under coverage by the manufacturer(s), separate of Bass Cat manufactured goods. Bass Cat makes no claim to represent, circumvent or exercise the independent manufacturer(s) warranties.

This warranty does not apply to (1) Any boat which shall have been repaired or altered in any way so as to affect its use and operation; (2) gelcoat cracking, crazing, blistering, fading, discoloring or any similar situation; (3) windshield breakage; (4) any boat which has been subject to misuse, alteration, neglect, accident, used for racing purposes or operated in a negligent manner at the opinion of Bass Cat Boats; (5) upholstery damage; (6) any boat utilizing over an 8" jackplate (2009) or altering of standard equipment offered specifically by Bass Cat; (7) any boat which has been overpowered, according to the maximum recommended engine horsepower specified for that particular model, on the capacity plate. (8) any part or component expired within a reasonable time of its expected operational period.

To validate the warranty, the boat registration card must be returned to Bass Cat Boats within fifteen (15) days of the original purchase. Under Federal law all boat manufacturers are required to notify first purchasers, in the event that any defect is discovered "which creates a substantial risk of personal injury to the public," or any noncompliance with Federal regulations by the manufacturer. Failure by any first purchaser to fill out and return the warranty registration card, or complete transfer, may make it impossible for Bass Cat Boats to give direct notice to such purchaser and does not execute warranty.

This warranty is expressly in lieu of all other warranties, express or implied, including any implied warranty of merchantability or fitness for a particular purpose, and in lieu of all other obligations or liabilities on the part of Bass Cat Boats. Bass Cat Boats expressly denies, on the part of any person to incur or assume for it, any other liability in connection with the sale or use of its boats and trailers. Implied warranties, if any, given by valid law, shall be limited to the duration of this written warranty.

The obligation of Bass Cat Boats, under this warranty, shall be limited to the repair or replacement of any part which is judged defective by Bass Cat. During the term of this warranty repairs will be made free of charge, at any authorized Bass Cat Service Center under guidelines accepted by Bass Cat, or by Bass Cat itself at its discretion and approval. Transportation costs to the factory are the responsibility of the purchaser. All warranty repairs must be approved by Bass Cat personnel, whose decisions are final. Removal of components which are termed rigging parts will not be the responsibility of Bass Cat Boats. Bass Cat Boats will not be liable for haul-out, launching, towing or storage charges, inconvenience or loss of time or income, or any other special or consequential damages of any kind or nature.

Bass Cat Boats accepts no liability for those components which are or may be marketed to the retail consumer and selected as standard or optional equipment on a Bass Cat Boat. Examples of those components may be and are not limited to, outboard engines, propellers, fish finding equipment, instruments, trolling motors, battery chargers, engine controls and ignition switches, batteries, radio/stereos, bow guards and covers.

An extended Lifetime Warranty also applies. These are transferable warranties through an authorized Bass Cat dealer or through Bass Cat Boats. There is a charge for transferring the warranty and it may be transferred only under the guidelines issued at that time period. Transfer is only complete upon receipt by Bass Cat, qualification, fees and transfer.

Extended Lifetime warranty to the original consumer is transferable on used boats which are sold through an authorized Bass Cat dealership and/or pass an applicable qualifications check list for that particular model. There is a charge for verification and transfer. Lifetime warranty covers manufacturers defects in the structure in its original state. Any modifications, additions or changes to the boat from its original manufactured condition may be judged invalid for transfer. Under those conditions only the fees for transfer will be redeemed. Qualification fees will be deemed as a service performed.

Assessments of the Lifetime Warranty will be executed base prorating dependent on the age and condition of the boat, using NADA, ABOS, or similar accepted value booklets available at that time.

Bass Cat warrants all Bass Cat trailers for a period of two (2) years, for noncommercial use under guidelines stated in this limited warranty. No exceptions or other offers apply. Tires and certain other items may be subject to their own independent warranty restrictions and available only through those company(s) dealers, agents or representatives. Transfer is applicable under transfer guidelines in this written warranty.

The information in this literature is based upon the latest product information available at the time of publication approval. Bass Cat Boats reserves the right to make changes anytime, without notice, in colors, equipment, specifications, materials, hulls, prices, and discontinuation of models. When changes are made, we reserve the right to do so without incurring the obligations to equip, or modify, existing models built prior to the date of such changes.



P.O. Drawer 1688 ♦ Mountain Home, AR 72654 870.481.5135 ♦ www.BassCat.com

©2013 Bass Cat Boats ♦ Proudly Made in the U.S.A.

Bass Cat Boats makes every effort to ensure that the brochure information herein is correct and accurate at the time of production. Continual product refinement and design changes may result in revisions to current products that may not be shown in this brochure. We reserve the right to make changes in models, specifications, colors, and features at any time. Please see your authorized Bass Cat Dealer for additional information, options and specific warranty information.