

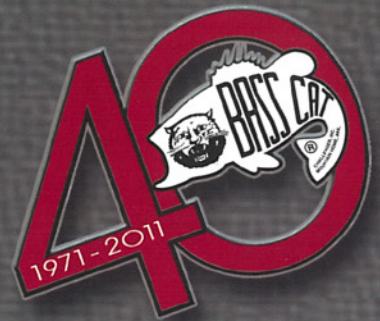
2013



Bass Cat

TOTAL PERFORMANCE BASS BOATS

WE BUILD DREAMS ... IT'S A FAMILY TRADITION!



WE BUILD DREAMS ... IT'S A FAMILY TRADITION!



not quit as 2012 brings the new Cougar FTD and the Margay. Things continue to evolve here and that never changes.

We want to stop today and say Thank You! Thank You for considering the ownership of a Bass Cat. Thank You to the Charlie Crider's who have owned a Bass Cat since the early 1970's, to the Jim Byler's who have been our friends since the beginning of Bass Cat. To many, many folks and friends, Thank You to Tommy Martin, Dave Fenton and many more who have been pivotal at many different marks of time, pivotal in the development, support and continued ownership of a Bass Cat Boat.

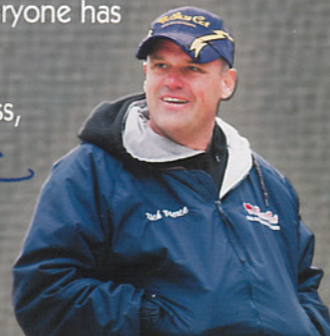
Without you guys, we fail, and you have not allowed that. We don't ever want to seem as if we have no other competition, but if we focus well on what we do, the rest will have to follow. As we have said before, you can lead, follow or fail. You all know what our choice is and has been for 40 years!

Thank you again for considering a Bass Cat and we hope everyone has a wonderful 2012!

Good Fishin' and God Bless,

Pat Pierce
Rick Pierce

Ron & Rick Pierce

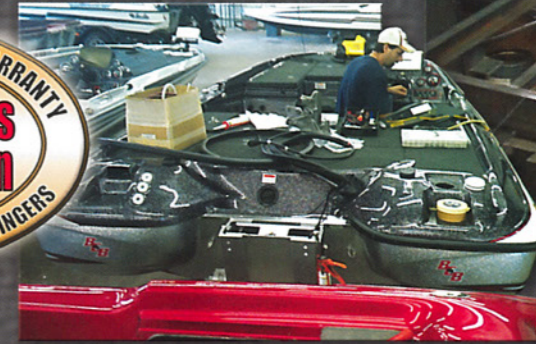


those who get that lump in your throat when you have to sign those checks. You know what meeting payroll, monthly bills, sales and the other issues is all about. And those who meet these obligations seem to be even more passionate about doing business with companies and families who share the same principles.

While we have a very rich heritage and a deep history, which few have in bass fishing, we don't spend much time looking back as we keep moving forward. A great deal of that history of Bass Cat can be found in albums on the Bass Cat Facebook page. Please take a look!

We just completed the acquisition of Yar-Craft, merging it into our production at this facility. This is an entirely new venture for us as we enter the walleye arena with a brand that has a heritage of its own. Corey Suthers and Norlen are handing those reins to us from their own family history. We want to take this brand to the same level that Bass Cat owners experience, so we are on a mission to help it grow. Developing even more than where Corey and staff have Yar-Craft now.

These past few seasons allowed us to bump through this economy with some increase in momentum. We continue to improve the product line as others seem be repainting the walls and changing the labels. In 2011, it was new consoles, revised striping, hulls and more! Today we have



CRAFTSMANSHIP

Hand craftsmanship ... utilizing only the highest quality materials available is a family tradition at Bass Cat Boats which is not compromised. Each step in the manufacturing process is completed by individuals who demand quality ... with attention to the smallest detail in every phase of the boat building process. Customer satisfaction, while continually striving for perfection in our products is the basis of our success, of which we are very proud. Hopefully you look for it in every facet of the Bass Cat Boat. As you look at this "Family Album" of photos taken throughout the Bass Cat factory, keep in mind that our boats, trailers, wiring harnesses, are all made from raw materials at Bass Cat, *not made for Bass Cat.*

When we put the Bass Cat name on our boat, we know that every facet of the final product meets our uncompromising Quality Craftsmanship standards ... *not someone else's.*



This new, limited production, Bass Cat leaves nothing on the "I need" list. At 21' 5" this new Cat is a monster, with ratings for up to a 350 engine. It is pretty nimble as it jumps out of the hole in a handful of seconds, and reaches a GPS top end from high 60's to mid 70's. Speed, of course, will depend on factors such as load, power and water conditions.

In the mid 2000 era Bass Cat sidelined the Jaguar name until a boat was built that was worthy of that iconic heritage started in 1996. This Jaguar has achieved that goal!

This rig is designed to address a luxury bass boat market in unmatched style. It is a massive rig with a huge deck expanse including a 6' casting deck (width). Overall there are eight (8) storage areas between the bow and console, including two of the most innovative tackle systems to date!

The front deck includes those two tackle organizing storages, dual rod lockers, net scabbard, two additional storages, a helmet box for two helmets in the deck step, and a 34 quart cooler with sandwich tray.

Seating is cockpit style in a deep body and includes a cubby to the fire extinguisher and a throw pocket under the drivers and passengers bucket style seats. There is also a pivoting center seat for a third passenger.

Anglers will find three (3) rod storage compartments, which includes an added left

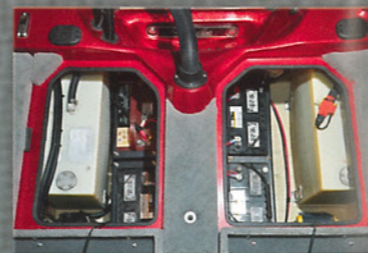
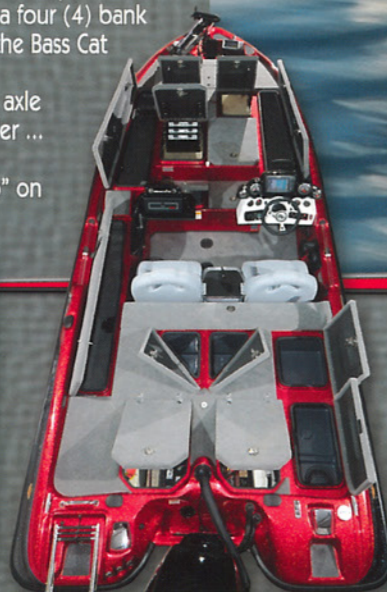
hand 8' passenger rod storage box located in the rear deck.

This offers a 6 1/2' rear casting deck width, you will also find a passenger storage compartment, spare prop and oil storage and a very unique spare trolling motor compartment behind the seats, which also serves for life vest storage. Options on most other top of the line rigs will probably be found as "standards" on this Big Cat. Standards such as; a security system, lighted storages areas, dual rear view mirrors on console, Sony iPod USB Stereo, fully deployable telescoping hinges boarding ladder, built in LED recessed bow light, and a four (4) bank charger all standard. As for the Bass Cat Jaguar Trailer, a Grab Post and step at the tongue, dual axle brakes on a tandem axle trailer ... all standard.

Everything is "over the top" on this 2012 Bass Cat Jaguar.

Specifications:

Length	21'5"
Min. Storage Length	26'5"
With Swing Away Tongue ...	23'9"
(Add: 4" for Yamaha Outboards)	
Beam	94+"
Approx. Wt.	2150 lb.
Fuel Capacity	53 Gal.
Max. H.P. Range	250-350



Boat Driver: Rick Pierce
Boat Color Shown: CO837



Puma

The Bass Cat Puma FTD might just be the "baddest" fishing rig in the line up? We simply took the front half of the Puma and married it to the back half of the Cougar FTD; the best characteristics of both boats ... resulting in one awesome bass boat. You have a 20'4" hull with a 94" beam, it's rock solid and will cut the waters surface with ease. This new hull is found on the Puma FTD, as well as, all of our 20' models. Cool graphic striping is found on the hull, as well as, the option for a second hull graphic.

This hull has been tweaked to be quicker, more stable, and provides an even softer ride.

The deck layout provides storage all the way from the bow to the console with seven (7) compartments, including a place

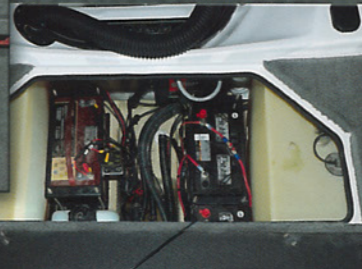
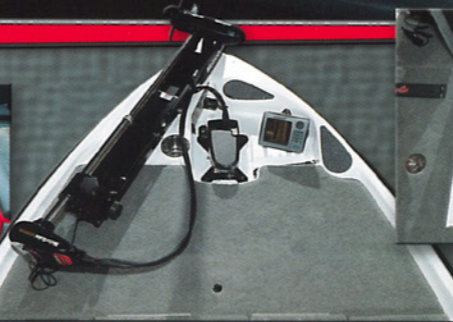
for your net and measuring board. Plus, two more compartments under the seats, and two more on the back deck. The modular console offers the ability to hold the Humminbird 1198, or Lowrance HDS10. Enjoy cool lighted handrails and pop up mooring cleats at your fingertips for securing this baby at the dock.

Innovations? What about a built-in LED bow navigation-al light? It's not only cool, but, very practical. Seat pedestal storage, a stainless screw in drain plug and premium Southco- Latches make life on the water just a little better.

Our "all fiberglass" structures carry a Transferable Limited Lifetime Structural Warranty.



Optional Hot Foot With Sliding Base



Southco Latches



Boat Driver: Kevin Short
Boat Color Shown: V1075



Specifications:

Length 20'4"
Min. Storage Length 25'6"
With Swing Away Tongue ... 23'0"
(Add: 4" for Yamaha Outboards)
Beam 94"
Approx. Wt. 1825 lb.
Fuel Capacity 52 Gal.
Max. H.P. Range 200-300

Cougar FTD

Bass Cat's 2012 Cougar FTD features an updated hull with the new rounded bolt, optional graphic striping options on the nose cap and rear cap. This top cap design includes our unique livewell design in the Cougar FTD. These triangle shaped livewells offer more space for your catch and an additional 10 gallons to the capacity. A new splash well design offers clean rigging to the outboard. The front deck has a place for your buoy markers, close at hand, yet out of the way.

This 20' hull will provides a solid ride with performance handling like it's running on rails.

The new Cougar FTD modular console design offers the ability to hold the Humminbird 1198, or Lowrance HDS10 on the face of the console.

The deck layout provides storage from the bow to the console within six (6) compartments ... two are under one lid in the front center. Vast additional storage is also found under the euro-style bucket seats with an ice chest located in the center of the seat arrangement.

A compliment of standard features are found in this Cougar FTD. No plastic dashes, or fancy cover ups ... just an all out fishing machine from bow to stern.

All Bass Cats are made with All Fiberglass hull construction techniques.

Our structures carry a Transferable Limited Lifetime Structural Warranty.



Specifications:

Length	20'4"
Min. Storage Length	25'6"
With Swing Away Tongue ...	23'0"
(Add: 4" for Yamaha Outboards)	
Beam	94"
Approx. Wt.	1765 lb.
Fuel Capacity	52 Gal.
Max. H.P. Range	200-300



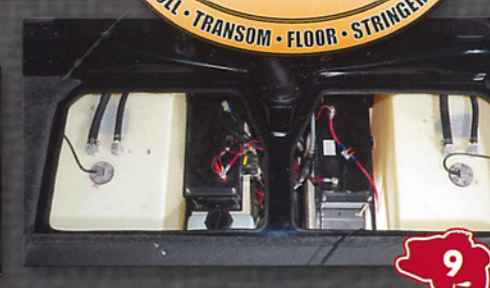
Optional Sony Stereo with iPod, and iPhone Links



Boat Driver: Rick Pierce
Boat Color Shown: M2687



Optional Passenger Console (DC)



Eyra

The Eyra has been termed a "bridge" boat from inception. Your first thought while admiring it is that it will in fact go from bridge to bridge in break-neck speed, depending on your set up of course. But, that's not the intended meaning. It simply means you will be at home in the cockpit with an economical 200 horses, or with a high output 250 bolted to the rear. The range in ponies is the goal on this hull, to go along with the throttle pounding performance. It all depends on your mission, what your experience is and your equipment.

The hull utilizes a running surface developed from a design that began over four years ago, and locked it in for the Eyra a few years back.

This boat is designed to maximize it's strengths of enhanced handling and fuel mileage statistics. It offers you the ability to perform at the 70 MPH mark with extremely impressive handling ... all with a 200 HP engine.

At the base structure you will find an All Fiberglass hull with a Vacuum Molded Transom, Fiberglass stringers and floor which are model specific. And a Vinyl Ester barrier coat is found between the Gelcoat and the laminate. The new design in Bass Cat hull stripes is there, with the option of a smaller trademark Bass Cat hull stripe, offered to match the lower hull boot color. On the deck or cap, sculpted Peak and Body lines in the outer assembly are very detailed, plus there are radiused concave striping areas and other styling enhancements in the deck.

Those molded peak and body lines on the deck offer the ability to color the nose cap one color, and the main body section

another. You have the ability to custom color like never before. The hull styling also finds a defined panel on the hull with an area for registration numbers.

The functional cowl vent ducts, for air ventilation, are another styling enhancement. These are designed as sculpted lines in the shape of a fish. This cowl vent gives you the ability to align or combine the boats colors for a desired aesthetic look, matching the insert colors.

On the deck you will find a new innovation in tackle storage, with removable stainless wires that adjust to fit Plano, Flambeau, or Falcon style tackle boxes. Just move the pinned wires to fit your choice in box styles. Within the center tackle storage you will also find an integrated net scabbard. This can be deleted in production if preferred for more storage.

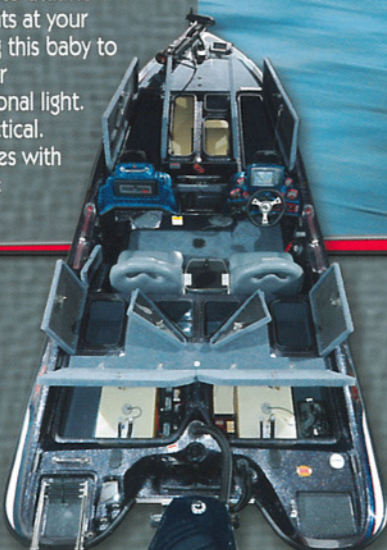
Eyra consoles are the "Premium" style and were designed to accommodate up to the Humminbird 1198 or Lowrance HDS10. The optional BCB NexSysLink gauges are impressive with their LCD display of multiple functions, plus an BCB integrated touch pad to control them.

At the morning takeoff the lighted handrails are drawing attention to that new deck, and pop up mooring cleats at your fingertips are a plus for securing this baby to that dock. You will also find our innovative built-in bow navigational light. It's not only cool, but, very practical.

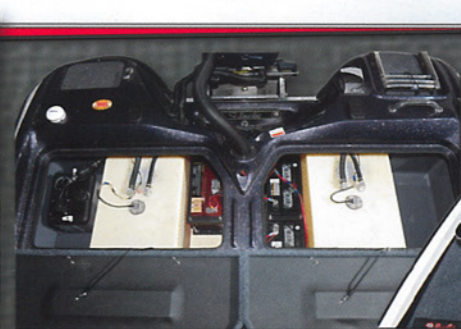
Of course the new Eyra comes with our limited Transferable Lifetime Warranty.

Specifications:

Length	20'2"
Min. Storage Length	25'0"
With Swing Away Tongue ...	22'5"
(Add: 4" for Yamaha Outboards)	
Beam	94.5"
Approx. Wt.	1725 lb.
Fuel Capacity	52 Gal.
Max. H.P. Range	175-285
Special Order Hull	300



Boat Driver: Stuart Malone
Boat Color Shown: B0860



Puma

The Bass Cat Puma and its brother the Puma FTD just might be the best boats in any line up!

The "all fiberglass" compression manufacturing, utilizes our trademark vacuum process, which is years ahead of other bass boats construction methods. The 20'4" hull with its 94" beam is rock solid. This hull is very stable, yet agile even in the roughest waters.

The deck layout provides storage from the bow to the console with seven (7) compartments. There's even a place for your net and measuring board, close

within reach. It's trendy modular console is designed to provide space for a built-in LCR. Plus, conversion to a dual console (DC) is a pretty simple process. This console also sports a custom designed Italian steering wheel with six (6) sides, and a Bass Cat mark in the center cap. Beside the console you will find two cool items. First, lighted handrails, which are, too cool, and added pop up mooring cleats at your fingertips for securing your ride at the ramp's dock.

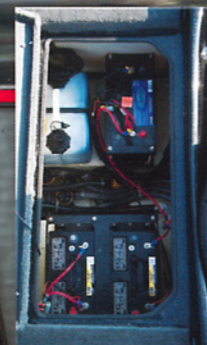
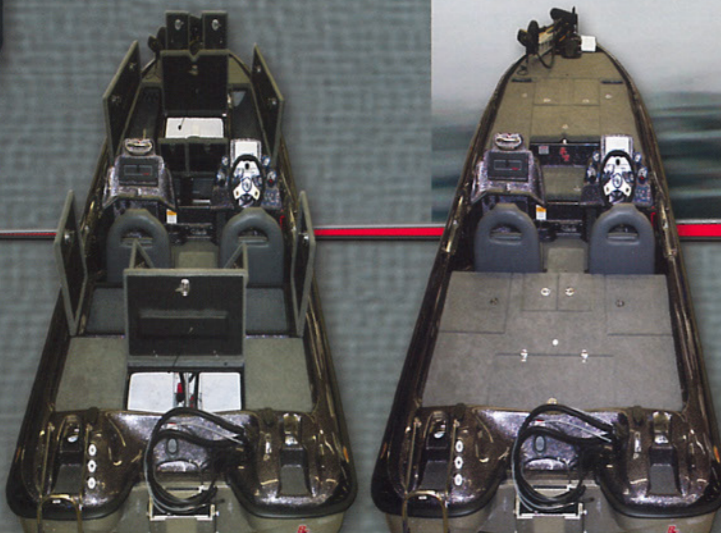
Compare the standard features, performance, handling, rough water ride, quality craftsmanship, customer satisfaction, and Bass Cat's reputation to any bass boat on the market ... bar none.

Our structures carry a Transferable Limited Lifetime Structural Warranty.



Specifications:

Length	20'4"
Min. Storage Length	25'6"
With Swing Away Tongue ...	23'0"
(Add: 4" for Yamaha Outboards)	
Beam	94"
Approx. Wt.	1835 lb.
Fuel Capacity	43 Gal.
Max. H.P. Range	200-300



Rear Storage Provides Easy Access to Batteries, Oil and Pumps



Optional E-Ladder Mounts to Jackplate



Passenger Rod Bungee



Boat Driver: Todd Witt
Boat Color Shown: P0982



Cougar

ADVANTAGE

The Bass Cat Cougar Advantage for 2012 just might be the most economical 20' Tournament Bass Boat on the market!

A "brother" to our other top of the line Cougar FTD, the Advantage has less bells and whistles and yet maintains a wonderful 20' ride and stability.

The Cougar Advantage utilizes the same "all fiberglass" compression manufacturing, plus the Bass Cat trademark vacuum process, which is years ahead of other bass boats construction methods.

The 20'4" hull with it's 94" beam is rock

solid. This hull is very stable, yet agile even in the roughest waters.

Deck layout provides storage from the bow to the console with six (6) compartments. The Cougar's seats provide support in all the right spots, perfect on a long run and the Euro' seat bolsters cradle you in glove like comfort. Styling advances are illustrated on a new modular console capable of holding the Lowrance HDS8, or the Humminbird 900 Series Graphs. Plus, conversion to a modular dual console (DC) is a pretty simple process.

Compare the standard features, performance, handling, rough water ride, quality craftsmanship, customer satisfaction, and Bass Cat's reputation to any bass boat on the market ... bar none.

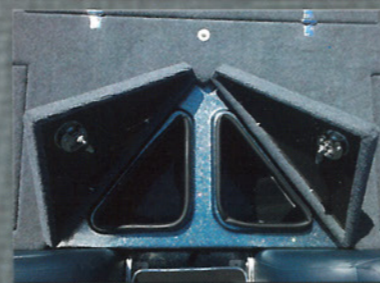
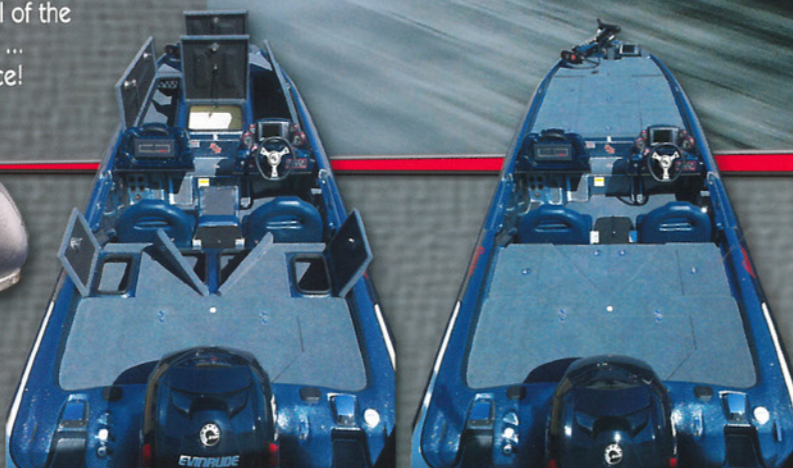
Our structures carry a Transferable Limited Lifetime Structural Warranty.

When you want to play in the big boy's sandlot, but want to save \$\$\$ without all of the "bells and whistles" ... this is a perfect choice!

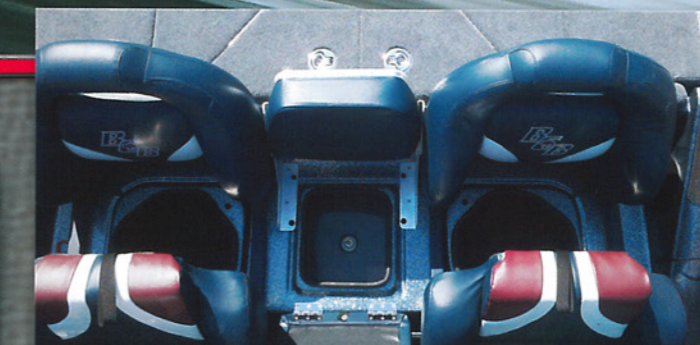
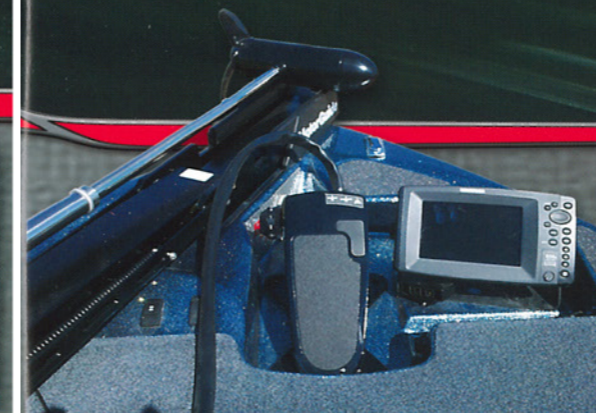


Specifications:

Length	20'4"
Min. Storage Length	25'6"
With Swing Away Tongue ...	23'0"
(Add: 4" for Yamaha Outboards)	
Beam	94"
Approx. Wt.	1835 lb.
Fuel Capacity	36 Gal.
Max. H.P. Range	200-300



Boat Driver: John Crews
Boat Color Shown: G8941



TRANSFERABLE LIFETIME WARRANTY
All Fiberglass Construction
HULL • TRANSOM • FLOOR • STRINGERS



Pantera IV

It's like someone really listened to the desires of every serious tournament fisherman ... sat down with a piece of clay, and molded the perfect 19' bass boat.

This vacuum molded all fiberglass hull is pure perfection in quality, craftsmanship, and boating innovations.

The front deck maintains our patented recessed trolling motor pedal basin at the bow ... behind the pedal is nothing but storage all the way back to the consoles. Up front you will find a recessed net and Golden Rule storage pocket ... instant access! Surrounding the net are six (6) storage areas on the front deck alone including 2 full length rod boxes, and a "step-up" ice chest.

The new Pantera IV's modular console design offers the ability to hold the Humminbird 900 Series, or Lowrance HDS 8 on the face of the console. A Humminbird 728 is standard in the dash.

An Italian design steering wheel with six (6) sides is not only cool looking but offers

secure comfort while driving. The Pantera IV's euro style bucket seats provide higher backs, and rolled bolsters also offer additional support.

The roomier rear section of the deck finds compartments spacious and deep so your partner can stuff all of his day's needs in his "office" close at hand.

This Pantera IV as our other models carries a Transferable Limited Lifetime Structural Warranty.



Specifications:

Length	19'5"
Min. Storage Length	24'5"
With Swing Away Tongue ...	21'8"
(Add: 4" for Yamaha Outboards)	
Beam	94"
Approx. Wt.	1525 lb.
Fuel Capacity	33 Gal.
Max. H.P. Range	135-200



Optional Stereo Seat Speakers



Boat Driver: Kevin Short
Boat Color Shown: N3143



Bass Cat



Optional Southco Latches and Custom Carpet Logo are Shown Above

Pantera II

Bass Cat reintroduced the Pantera II in 2007 as part of its 35th anniversary celebration and now this 2012 model carries on the tradition with the new rounded stripe and a very sleek console. Bass Cat has built more Pantera IIs than any other model in the company's history.

The optional BCB NexSysLink Gauges are a sweet upgrade. They offer digital readouts monitoring speed, tach, trim, and fuel.



Specifications:

Length 19'1"
 Min. Storage Length 24'3"
 With Swing Away Tongue ... 21'7"
 (Add: 4" for Yamaha Outboards)
 Beam 93"
 Approx. Wt. 1495 lb.
 Fuel Capacity 33 Gal.
 Max. H.P. Range 135-200

This Pantera II measures 19' 1" in length with a 93" beam that carries a 200-hp rating. The floor plan features dual rod lockers and large dual storage boxes on the front deck along with a sectioned cooler. The rear width of the front deck is just short of 60 inches. Two rear deck storage areas are very large, and straddle dual livewells.

The bench seating offers a fold down padded center seat for a third passenger. When folded down, you have a rubberized solid surface as a step to the rear deck.

This new Pantera II is built with our innovative "all fiberglass" compression manufacturing techniques just as our other models. This method of construction utilizes our trademarked vacuum process which is years ahead of other bass boat construction processes and offers our Transferable Limited Lifetime Structural Warranty.



Optional Power Pole(s)



Boat Driver: James Niggemeyer
 Boat Color Shown: S9981



Optional Passenger Console (DC)



Sabre

FTD

This Sabre FTD targets our younger tournament anglers as well as seasoned anglers who don't face big water, or, aren't speed demons ... this boat fits a strong emerging market. It fits well with those who are also energy conscious as it is a very efficient tournament rig.

Sabre FTD has a hull that offers outstanding handling and performance characteristics, compare it to a 19' hull. You're going to be impressed. New hull graphics with a rounded bolt compliment the top cap graphics.

The front deck floor plan features dual rod lockers and huge dual storage boxes. A unique recessed pocket on

the deck helps hold rods and reels in place, plus you'll find a divided cooler. Two rear deck storage areas are very large, and straddle dual livewells. Euro-style bucket seats provide high backs for "long run" support and comfort. A fold down center seat offers bench seating for a third passenger, or an optional carpeted step surface to the rear deck.

A hot new modular console provides easy visibility of all gauges plus accommodates a Lowrance HDS8 or a Humminbird 900 Series graph.

This Sabre FTD is built with our innovative "all fiberglass" compression manufacturing techniques. This method of construction utilizes our trademarked vacuum process which is years ahead of other bass boat construction processes and offers our Transferable Limited Lifetime Structural Warranty.



Specifications:

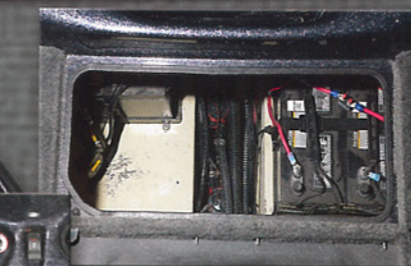
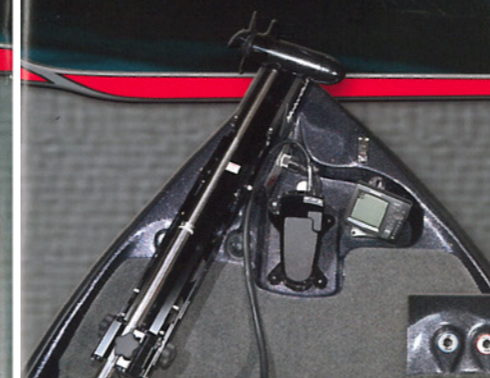
Length	18'1"
Min. Storage Length	22'2"
With Swing Away Tongue ...	19'8"
(Add: 4" for Yamaha Outboards)	
Beam	93"
Approx. Wt.	1215 lb.
Fuel Capacity	33 Gal.
Max. H.P. Range	115-175



Deck Recess
Helps Cradle Reels



Boat Driver: Terry Butcher
Boat Color Shown: T9862



Optional Carpeted
Step With Storage
& Dual Cup Holders



Standard
Padded Seating

Most people take the trailer sitting under that shiny new boat for granted ... but we take our trailers very seriously. Unlike many manufacturers, Bass Cat builds Bass Cat Trailers ... one at a time, to fit the specific hull design of each model boat. Every member and cross support is jigged, fitted and welded in U.S. Steel to exact tolerances ... there is zero adjustment on a Bass Cat Trailer. Axles are also jigged, and welded in a pattern weld to assure minimal tire wear from caster to camber, and supported with a multi leaf trailer spring. Each trailer is painted and carpeted to perfectly coordinate with the boat. Innovations as the newly designed Grab Bar and Step System, and absolutely the finest Swing Away

Tongue, all make life at home and on the road a lot more convenient for Bass Cat Boat owners. Also note our Torx Rubber Axle provides a true "Soft Ride Suspension." Our innovative Optional GatorHyde™ coating provides a heavy rubberized protective clear coating to repel harmful impacts from rocks and other road debris.

At Bass Cat, your safety and the investment you have made in your boat are not taken for granted ... we demand the highest quality materials and hand craftsmanship, for your safety and security ... it's a Bass Cat family tradition.

- NOTE: Optional Dual Axle Brakes are recommended on all Tandem Axle Trailers.



Optional Aurora Travel Cover



Optional Dean's Two Piece Cover



Our Grab Bar & Step System make entry from the trailer to boat safe and simple. Also available as an aftermarket "add-on" for older trailers.



The Very Finest Swing Away Tongue



GatorHyde® Rubberized Coating Helps Protect Against Road Debris



New Torx Rubber Axle ... A True Soft Ride Suspension!



Optional Fulton Premium Heavy Duty Jack



Standard Beadlock



Optional Shooter (Availability Pending)



Optional 20" BOSS Wheel (Availability Pending)



Optional Spare Tire Aqualon Cover



Boat Buckle Retractable Tie Downs



Optional Back Up Light (s)



Optional LED Trailer Lighting



CLOTHING

For a complete listing of Clothing & Accessories, check out our BassCat.com Internet Store!

www.basscat.com

Call us: 870-481-5135
8:00am - 4:30pm (CST)
Monday - Friday

- All Items Subject to Availability and Price Change.
- Allow 4-6 Weeks for Delivery.



Baywatch \$75.00
Youth \$65.00

- Medium Weight 100% nylon Toughlan® Shell • Wind Proof • Water Resistant • 9 oz. Heavyweight Cotton/Polyester/Rayon Jersey Grey Color Lining • 3 Piece Cut Hood • Raglan Sleeves • 2 Outside Zipper Pockets, inner Chest Pocket
- Sizes: S, M, L, XL, 2XL, 3XL (All Colors), 4XL, 5XL, 6XL, Tall: LT, XLT, 2XLT, 3XLT, 4XLT, 5XLT, 6XLT (Colors: ^)
- Youth Sizes: S, M, L, XL (Colors: *)
- Colors: Gold, Black^*, Navy^*, Royal^*, Maroon^*, Forest Green^*, Red^*, Purple^*

Sport Wick Fleece ... \$49.00

- Ltwt 8 oz. 100% Polyester • Tonal shoulder panels • Raglan sleeves • Open Cuffs and hem
- Sizes: L, XL, 2XL • Colors: Red, Black, Blue

Cat Shirt \$78.00

100% Air Kontrol Polyester Sublimated Jersey • Back has similar graphics as front

- Sizes: M, L, XL, 2XL, 3XL, 4XL
- Color: As Shown



Pro Angler Rainsuit \$299.00

- Removable BCB Fleece Liner • Full cut fit • Zip off hood
- Elastic drawstrings • 5" Fleece collar • Full Velcro closures • Flap bellows pockets with two D Rings • Internal zippered pocket • Nylon Lining • Sleeves have inner Neoprene cuff with Velcro closure • Bibs have high back suspenders • Guessed front • Reinforced Knees • Pocket with double storm flaps • Embroidered logos
- Sizes: S, M, L, XL, 2XL, and 3XL
- Color: Black/Red (As Shown)



Life Vest by Mustang ... \$90.00
100 MPH Vest • Fleece Lined Collar • 500D Cordura Outer Shell provides outstanding durability • Air Soft Foam creates a flexible and comfortable fit
Sizes: S, M, L, 1X, 2X, 3X



Stainless Travel Mug .. \$13.00
Coffee Mug \$6.00
Coozie \$2.50





Trophy Caps \$12.00
 • 100% Cotton • Buckle Closure • Low Profile
 • Navy/Red/Wh, Wh/Gold/Blk, Marron/Wh/Blk



BCB Caps \$15.00
 • Medium Weight Cotton •
 Blue, Off White, Yellow, Black



Custom Sandwich Caps \$12.00
 • 100% Cotton • Velcro Closure • Sandwich Visor
 • Red/Blk, Red/White, Blk/Khaki



Camo Caps \$15.00
 • Med. Wt. Cotton • Velcro Closure



Striker Cap \$15.00
 • Off White • Med Wt Cotton Twill
 • "Feel The Rush" embroidered
 on side of brim • Team Bass Cat
 embroidered on side of cap

**Ladies Pink
 Knit Cap \$10.00**



Bass Cat Visor \$12.00
 • 100% Cotton • Colors:
 Red/Black, Yellow/Black, Pink/Gray



Twill Visor \$10.00
 • 100% Cotton • Velcro Closure
 • 2 1/4" Crown • Colors: White, Khaki



Anniversary Cap \$15.00
 • 100% Cotton • Velcro Closure
 • Red/Black or Navy/Khaki



Quest Cap \$15.00
 • 100% Cotton
 • Buckle Closure • Low Profile

We call this a "family reunion" because it's one time each year that all Bass Cat owners (our family) are invited to Mountain Home, Arkansas for some good ole Ozark hospitality. Our only goal is to show our sincere appreciation to our family of Bass Cat Boat owners. This year is very special as it marks our 25th Invitational ... in the same year we celebrate our 40th Anniversary as a Bass boat builder. Pretty cool ... it promises to be *VERY SPECIAL!*

The two day Thursday & Friday Invitational begins with registration on Wednesday evening. Thursday morning is truly a sight to behold, as the sun peeks over the mountains, your heart starts pounding a little faster as daylight reveals a bay with little lights dancing all around on the water. It's not often that you see such a spectacle as 400-500 Bass Cat Boats staged for an early morning tournament takeoff. It is an

OWNER'S INVITATIONAL



overwhelming sight to behold. The Bass Cat Owner's Invitational is a true family affair. We provide an atmosphere for family participation.

Friday morning brings the final day of competition and some serious thinking, and wondering if any of those fish stories heard the night before had any truth to them. The afternoon's final day weigh in provides a little computer printout that makes several folks really appreciate this "Family Reunion."

We promise you one thing, on the way home you will be looking forward to the next year's Bass Cat Owner's Invitational.



WARRANTY EXTENDED LIFETIME TRANSFERABLE STRUCTURAL WARRANTY

Bass Cat Boats warrants each new fiberglass boat to its original noncommercial purchaser for a two (2) year period. Warranted to be free from defects in the workmanship and materials, under normal use and conditions. Certain items are under coverage by the manufacturer(s), separate of Bass Cat manufactured goods. Bass Cat makes no claim to represent, circumvent or exercise the independent manufacturer(s) warranties.

This warranty does not apply to (1) Any boat which shall have been repaired or altered in any way so as to affect its use and operation; (2) gelcoat cracking, crazing, blistering, fading, discoloring or any similar situation; (3) windshield breakage; (4) any boat which has been subject to misuse, alteration, neglect, accident, used for racing purposes or operated in a negligent manner at the opinion of Bass Cat Boats; (5) upholstery damage; (6) any boat utilizing over an 8" jackplate (2009) or altering of standard equipment offered specifically by Bass Cat; (7) any boat which has been overpowered, according to the maximum recommended engine horsepower specified for that particular model, on the capacity plate. (8) any part or component expired within a reasonable time of its expected operational period.

To validate the warranty, the boat registration card must be returned to Bass Cat Boats within fifteen (15) days of the original purchase. Under Federal law all boat manufacturers are required to notify first purchasers, in the event that any defect is discovered "which creates a substantial risk of personal injury to the public," or any noncompliance with Federal regulations by the manufacturer. Failure by any first purchaser to fill out and return the warranty registration card, or complete transfer, may make it impossible for Bass Cat Boats to give direct notice to such purchaser and does not execute warranty.

This warranty is expressly in lieu of all other warranties, express or implied, including any implied warranty of merchantability or fitness for a particular purpose, and in lieu of all other obligations or liabilities on the part of Bass Cat Boats. Bass Cat Boats expressly denies, on the part of any person to incur or assume for it, any other liability in connection with the sale or use of its boats and trailers. Implied warranties, if any, given by valid law, shall be limited to the duration of this written warranty.

The obligation of Bass Cat Boats, under this warranty, shall be limited to the repair or replacement of any part which is judged defective by Bass Cat. During the term of this warranty repairs will be made free of charge, at any authorized Bass Cat Service Center under guidelines accepted by Bass Cat, or by Bass Cat itself at its discretion and approval. Transportation costs to the factory are the responsibility of the purchaser. All warranty repairs must be approved by Bass Cat personnel, whose decisions are final. Removal of components which are termed rigging parts will not be the responsibility of Bass Cat Boats. Bass Cat Boats will not be liable for haul-out, launching, towing or storage charges, inconvenience or loss of time or income, or any other special or consequential damages of any kind or nature.

Bass Cat Boats makes every effort to ensure that the brochure information herein is correct and accurate at the time of production. Continual product refinement and design changes may result in revisions to current products that may not be shown in this brochure. We reserve the right to make changes in models, specifications, colors, and features at any time. Please see your authorized Bass Cat Dealer for additional information, options and specific warranty information.

Bass Cat Boats accepts no liability for those components which are or may be marketed to the retail consumer and selected as standard or optional equipment on a Bass Cat Boat. Examples of those components may be and are not limited to, outboard engines, propellers, fish finding equipment, instruments, trolling motors, battery chargers, engine controls and ignition switches, batteries, radio/stereos, bow guards and covers.

An extended Lifetime Warranty also applies. These are transferable warranties through an authorized Bass Cat dealer or through Bass Cat Boats. There is a charge for transferring the warranty and it may be transferred only under the guidelines issued at that time period. Transfer is only complete upon receipt by Bass Cat, qualification, fees and transfer.

Extended Lifetime warranty to the original consumer is transferable on used boats which are sold through an authorized Bass Cat dealership and/or pass an applicable qualifications check list for that particular model. There is a charge for verification and transfer. Lifetime warranty covers manufacturers defects in the structure in its original state. Any modifications, additions or changes to the boat from its original manufactured condition may be judged invalid for transfer. Under those conditions only the fees for transfer will be redeemed. Qualification fees will be deemed as a service performed.

Assessments of the Lifetime Warranty will be executed base prorating dependent on the age and condition of the boat, using NADA, ABOS, or similar accepted value booklets available at that time.

Bass Cat warrants all Bass Cat trailers for a period of two (2) years, for noncommercial use under guidelines stated in this limited warranty. No exceptions or other offers apply. Tires and certain other items may be subject to their own independent warranty restrictions and available only through those company(s) dealers, agents or representatives. Transfer is applicable under transfer guidelines in this written warranty.

The information in this literature is based upon the latest product information available at the time of publication approval. Bass Cat Boats reserves the right to make changes anytime, without notice, in colors, equipment, specifications, materials, hulls, prices, and discontinuation of models. When changes are made, we reserve the right to do so without incurring the obligations to equip, or modify, existing models built prior to the date of such changes.



P.O. Drawer 1688 ♦ Mountain Home, AR 72654 870.481.5135 ♦ www.BassCat.com

©2012 Bass Cat Boats ♦ Proudly Made in the U.S.A.