



2021 Product Guide



FEEL THE RUSH™



Photo | 2020 Owners Invitational | Smith Lake, AL

2020 and now 2021 is a time of change.

Actually, change is inevitable. We all do it. What's important is we don't change our culture and we feel we have an amazing team and culture. At Bass Cat we are about to embark on over 50 years of boat building heritage, and Yar-Craft is just coming into its 52nd year. In spring 2021, this company was founded over 50 years ago, no doubt we have seen many changes. Through all the change, our culture and our purpose has remained. Some of you are looking for a culture to be a part of and we feel we have one worth considering... as things change. That change is in you, for we don't have any desire to change our culture as we grow.

We do evolve, we change, we change our lives, our homes, our structures and in many cases our jobs, as we grow. If our friends are true, we really never change them. You touch a friend of 40 years ago, and it's just about catching up. Change happens around us whether that is change for good, or change for the worst. 2020 was definitely a change for the worst. Or was it... and while no doubt for many 2020 was a terrible year, we all gained more than we ever could in our values. We value our families and freedoms more than we ever could. We value our lifestyle and our source of life sustention. We have focused on what matters in life and we are all working hard to protect those things we not only love, we appreciate. We are all growing and learning. It's more than just a CoVid atmosphere. Change is something that happens

in life or we would all still be using pony express. Our business is no doubt seeing a change as the industry has seen growth of never before levels. We thought we had a fishing license sale bump in 2009 and 2010, only to see more growth in 2020 than ever before. In some marine markets, the industry saw increases in annual sales beyond 50%, no doubt we received some growth and a few new faces in our brand as well.

Never before has the outdoor industry been so buoyed by any event in our recollection. Getting outdoors is safer, the open air is fresh, the water ever so much more open, and the experience we all know is unmatched. The chance of watching that eagle snatch a fish, a bobcat on the prowl, that line tick we've spoken of before, the experience and wonder of nature. Everyone today is reaching outdoors, being introduced to fishing as never before, seeing God's beauty in ways many never experienced.

As change brings new anglers to the outdoors, and our product, they are learning to understand our family and our culture, it extends beyond that. For both Bass Cat and Yar-Craft it is more than a purchase. Mark Lassagne, of Bass Angler, told me recently that he never knew how strong our following was. His comment was, **"There's a following with these boats that I haven't experienced with other brands, you've done a good job of building a stellar reputation."** No doubt we have tried to always build on what we have. That is not a change, that is a consistent effort over time seen through changes.

(continued from page 1) Change is happening as we see rotation in our Tour staff. Adding more solid anglers to our recognized staff of the likes of Birge, Sprague, Kennedy, Iaconelli and more. Adding solid men of faith like Mark Rose, Scott Suggs, Billy McDonald, Gregg Bohannon, and finally Takahiro Omori. Yes we lost a couple, though we really beefed up on faith and changed a few things here. And we would be remiss to not recognize Hank Cherry for his Bassmaster Classic win in the 50th Bassmaster Classic, in Birmingham.

We have change in our competition and change in our circles of fishing. We are focused on changing things in areas, especially out west. Our goal is bringing new aspects and innovations to the walleye market and we are definitely about to change some things in the bass market as well. Those changes are creating other changes and we are seeing new markets develop, gaining some fresh eyeballs on our product.

2019 saw our corporate culture awarded the "Most Innovative Marine Company" by Boating Industry. 2020 saw a repeat of that honor as Correct Craft was again recognized as the "Most Innovative Marine Company for 2020". We are a part of that as we had the new Yar-Craft 219 TFX receive the "Most Innovative Freshwater Fiberglass Fishing Boat", for 2020, at the Minneapolis Boat show last January. It also was recognized as a "Top Product" by Boating Industry as a marine innovation for 2020.

One of the highest honors we received in 2020 was the Better Business

Bureau "Torch Award for Ethics" in Arkansas. It was arduous to qualify as we proved how tedious issues were handled and how we navigated consumer issues. At Bass Cat and Yar-Craft we have some simple guidelines we live by. **1> Everything has a reason, 2> Be thorough in all we encounter, and, 3> Always do the right thing.** They also recognized "Who Took You Fishing" as the culture of our company shined through in many areas of the qualifications. We are very proud of this accomplishment.

And as for some of you, we are asking you to change and we know that. We are asking you to be a part of our culture and our way of life. If the values above fit your way of life, we welcome you to join us, become a part of the "Family"! Some are looking to be a part of a culture, and we feel that we share this.

That shouldn't make things too difficult, as change is inevitable.

God Bless and Good Fishin',

Rick

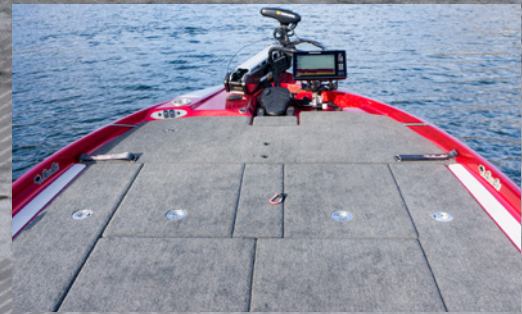


SIGNATURE PERFORMANCE

FEEL THE RUSH™

BOWMOUNT FEATURES

Trolling motor placement is crucial to maximizing efficiency while deployed. Precision maneuvering and proper tracking are achieved with the centerline mounting angle. Forward recessed pedal locations provide an ideal casting stance at all positions.



FRONT DECK FEATURES

Every aspect of the front deck is tailored to optimize efficiency. Narrow gunnels maximize deck space without sacrificing maneuverability in tight areas. Quick, unobstructed access to rods and tackle at all times thanks to innovative storage solutions. Every model offers layout variations to ensure compatibility with all angling styles and preferences.



SIGNATURE RUNNING SURFACE

All Bass Cats have a special feel that you don't find anywhere else. There are many subtleties that lie within every internal assembly as well as the running surface, providing a responsiveness that has to be experienced. The Signature hull design turns the water down to keep you dry. Instant bow lift allows you to pick your way safely through the roughest water. This refined hull design gives you the ability to **Feel The Rush™** like nothing you've ever driven.



MODEL DESIGN LINEAGE

	FRONT DECK WIDTH	←←←←←	→→→→→	PURE PERFORMANCE	
22' —	JAGUAR (p.10)				— 22'
21' —	LYNX (p.12)			PUMA (p.14) / COUGAR (p.16) 203 HYBRID (p.37) EYRA (p.18)	— 21'
20' —	CARACAL (p.20)				— 20'
19' —	PANTERA CLASSIC (p.26)			PANTERA II (p.22)	— 19'
18' —	MARGAY (p.28)			SABRE (p.24)	— 18'
17' —					— 17'



SIGNATURE CONSTRUCTION

1 VACUUM PROCESS HULL ASSEMBLY

Custom-matched stringers, floors and transoms are pulled together using massive vacuum pumps. This creates our famous one-piece hull design that you can truly feel as you pass the competition on the water.



2 CUSTOM 6-BOLT JACKPLATES

The custom plates made for Bass Cat are a big deal. Added rail length, full transom support and an extra tie bar gives you the advantage on big water.



3 FULL-WIDTH TRANSOM STRENGTH

No one compares to the BCB all fiberglass, vacuum molded units that extends the entire width of the boat. No fillers are used as we set into wet fiberglass to secure them to the hull.



TRANSFERABLE LIFETIME WARRANTY

HULL • TRANSOM • FLOOR • STRINGERS



4 CUSTOM-BUILT TRAILERS

Our trailers are built in-house, with the same intensity and passion that goes into our boats. Custom-fit to each boat model and made with U.S. steel.



5 24oz. PREMIUM MARINE CARPET

Not all marine carpet is equal. We use the heaviest grade available; 24-ounce per square foot. This carpet goes in every Bass Cat model for better wear, less fatigue and longer life.



6 QUALITY GEL COAT APPLICATION

Strategic steps utilizing high atomization and a wet flake application. This gives our boats the look, feel and consistency that is unmatched in our industry.

TAKE A CLOSER LOOK

Boats are not created equal. Period. Beneath the shiny gel coat and poly flake is where you can learn a lot about the structural integrity of a hull. Every Bass Cat leaves the factory with a blend of proprietary raw materials, custom-built assemblies and decades of fine-tuned processes that keeps them running strong beyond your years of ownership.



Photo Credit - Chris Brown



Hank Cherry and Family 2020 Bassmaster Classic Champion

Bass Cat would like to congratulate Hank Cherry on his dominant win at the 2020 Classic on Guntersville. He, along with anglers around the world are earning additional rewards at every competitive level.

QUEST is the most robust tournament rewards program in the industry. New boat owners are automatically signed up for Quest and qualify for our Tier-1 incentives for two years.

Used Bass Cat owners qualify at the time of warranty transfer with a one-time fee. Bass Cat also built-in a rewards program for our young anglers in both youth and college categories.

Visit BassCat.com for full details and take advantage of the QUEST tournament incentive program!



When it's your time,
be glad you were in a



WIN Up To
\$7,500
Per Event

- ☒ **OWN A BASS CAT**
- ☒ **REGISTER FOR QUEST**
FREE for original owners
- ☒ **COMPETE IN 100'S OF**
SANCTIONED EVENTS

Pro • Pro-Am • Co-Angler
Team • College • High School

Learn More At
BASSCAT.com

Official up-to-date rules and information available on the Bass Cat Owners Board

QUEST REWARD PAYOUTS

TIER 1 WIN

TIER 1 WIN - 125+ BOATS \$7,500.00

**Original owner 2019 model year and newer, with less than two years from date of original purchase.*

SANCTIONED EVENT WIN

125+ BOATS OR 250+ ANGLERS (Double Up)\$2,000.00

100+ BOATS OR 200+ ANGLERS\$1,000.00

60+ BOATS OR 120+ ANGLERS.....\$500.00

30+ BOATS OR 60+ ANGLERS \$250.00

Double Up = \$2,000 payout if the sanctioned tournament meets the boat/angler field requirements.

NATIONAL & REGIONAL COLLEGE WIN

FULL-TIME STUDENT 3.25+ GPA.....\$2,000.00

FULL-TIME STUDENT 2.75+ GPA\$1,000.00

SPLIT DECISION TEAM WIN

100+ BOATS OR 200+ ANGLERS\$1,500.00

60+ BOATS OR 120+ ANGLERS..... \$750.00

30+ BOATS OR 60+ ANGLERS\$375.00

**Split Decisions Teams in which both anglers own Bass Cat's, and both boats are registered with Quest.*

TOP-20 FINISH

TOP-20 FINISH 125+ BOATS.....\$500.00

TOP-20 FINISH 75-124 BOATS..... \$250.00

See qualifying events at basscat.com

NON-BOATER / CO-ANGLER WIN

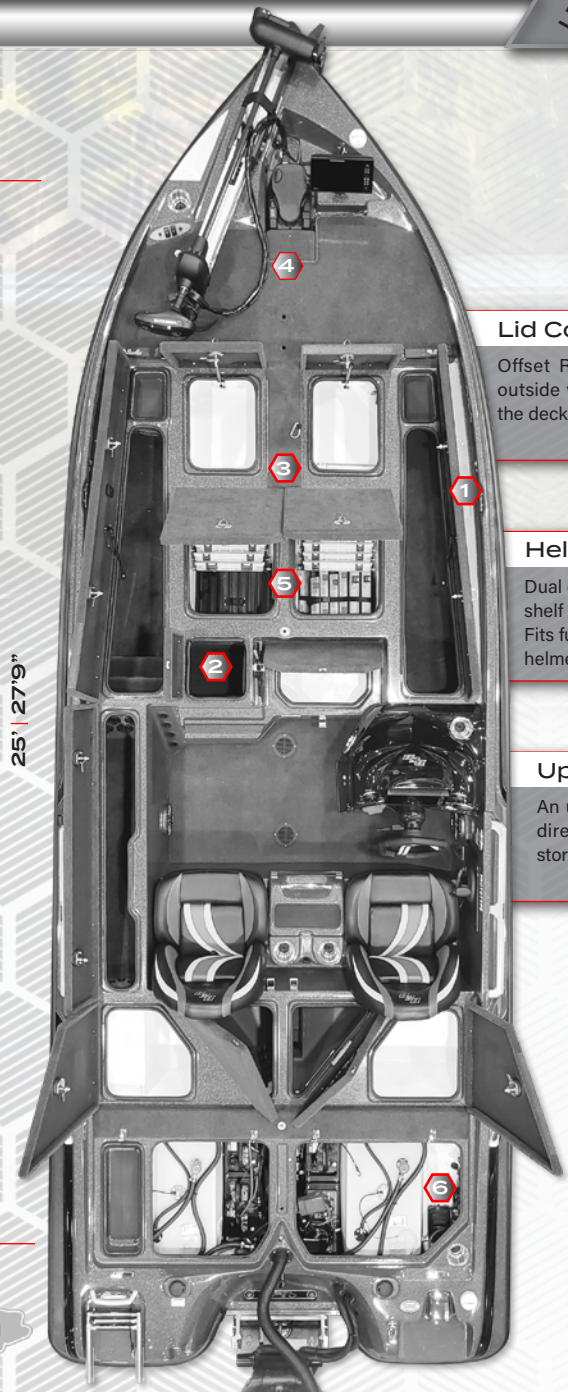
QUEST CO-ANGLER WIN 125+ BOATS\$500.00

QUEST CO-ANGLER WIN 85-124 BOATS..... \$250.00

**See rules for student and boat qualifications & list of qualifying events / circuits at BassCat.com*

JAGUAR

LENGTH 22 ft 0 in
 BEAM 94 in +
 HULL WEIGHT 2220 lbs
 FUEL CAPACITY 60 gal
 H.P. RANGE 250-400



Lid Configuration
 Offset Rod box doors for rods outside without losing rods off the deck when opening lids

Helmet Storage
 Dual crash helmet box with lift out shelf for second helmet storage. Fits full face motorcycle style helmets.

Updated Net Storage
 An updated net scabbard was placed directly between the twin forward storage boxes for instant access.



Updated padded bow with adjustable pedal position and two seat pedestal bases.



Swing-out 3700 storage for easy access. Plenty of room for additional boxes



Siren Marine's Connected Boat® technology provides you with peace of mind through real-time monitoring.



KING OF THE HILL

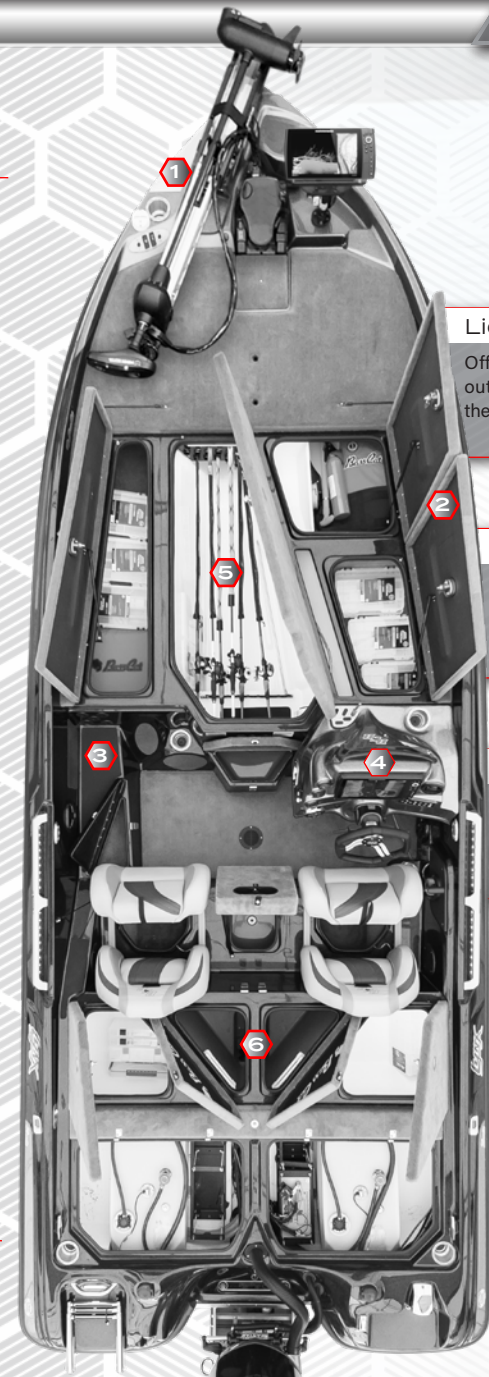
The Jaguar is in a class by itself as a predator to its own. Nothing was compromised in the design phase as the angler was in mind. One of the main objectives during the redesign of this original big body was overall performance starting at 250 or 300 horsepower. Or you can stretch it's legs out long with a choice of 350, 400 and the ultimate 450 ponies. The added length and BCB signature hull design chews

up waves with the new *Soft Touch Hull. Interior modifications abound from bow to stern. Inspired off of the stunning Lynx styling, it comes with the 900 lumen docking light, billet aluminum rails and vents. The safety lights and wake light will give the pack behind you LED lighting to follow. This flagship model is improved all over as the Jaguar exudes luxury from every aspect. It remains the Apex of bass machines.



LENGTH 20 ft 8 in
BEAM 96 in
HULL WEIGHT 1980 lbs
FUEL CAPACITY 60 gal
H.P. RANGE 250-300

Storage Length (with | without) Tongue Swing
23'11" | 26'8"



1 Lid Configuration

Offset Rod box doors for rods outside without losing rods off the deck when opening lids

2 Deck Lid Layout

Port and starboard storages can be opened without moving rods, as there is space behind the lids for rods with the lids open.

3 Removable Rear Lid

The large rear access is comprised of two individual lids on removable hinges allowing for easy reach to vitals from all angles.

4 All-Fiberglass Console



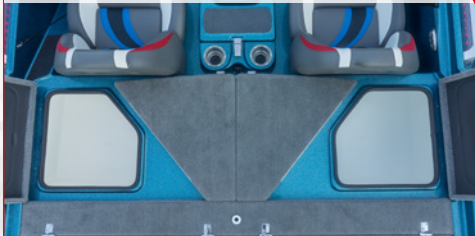
Rigid, one-piece fiberglass dash assembly designed for years of reliability.

5 Tapered Rod/Tackle Storage



Cavernous, lighted, off-center rod box with room for tackle storage on all sides. 8'6" max rod length.

6 Rear Deck Storage



Large rear storage boxes that flank the high capacity BCB triangular livewell system.



WIDE-OPEN PERFORMANCE

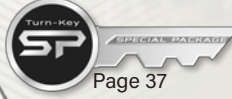
The Lynx is modified for 2021 as we power match hulls for today's engines. We are never a cookie cutter on design, and we wanted the Lynx to maximize the storage and deck space on both ends of the boat. Forward is a wedged center rod box that will easily hold 15 to 20 rods up to 9' (2) in length. That center rod box also stores up to 11 of those 700 series boxes. As with most of our models, a port rod storage is available with

starboard storage for everything you might need for any tournament, including helmets. The aft storage maximizes every square inch of space available. All while a longer hull line, and deep bow rise, provides a rock solid platform for fishing or running. It should stretch out and touch that next wave when others won't. If you want a Bass Cat with room to spare that crushes rough water, the Lynx can fill that dream.



LENGTH 20 ft 4 in
BEAM 94 in
HULL WEIGHT 1860 lbs
FUEL CAPACITY 52 gal
H.P. RANGE 200-300

Storage Length (with | without) Tongue Swing
23'2" | 26'1"



1 Front Deck Layout
Seven (7) compartments including dedicated net storage and rod lockers that accommodate rods to 8' in length.

2 Passenger Rod Stay
Padded co-angler rod storage for up to five (5) rods without interfering with passenger leg room.

3 Removable Rear Lid
Easy access to twin 26gal saddle tanks, custom BCB battery cages and access to all pumps.



4 Bow Configuration
Forward-focused recessed pedal tray allowing anglers on-point accuracy and efficiency.



5 Puma FTD Console
All-fiberglass console with color-matched bezels and 6X custom BCB steering wheel.



6 Bench Layout
Flip-up Wave-Crusher seats and an all-fiberglass step box with access to a second cooler below.

A PROVEN PLATFORM

The Puma FTD continues its legacy as one of the most popular models in the Bass Cat Premium category. At 20'4" in length, it carries the necessary footprint for maneuverability in tight areas. From the recessed foot pedal position anglers gain pinpoint accuracy, while improving efficiency. On water efficiency is best experienced when one grabs that dip net from the center scabbard. As you head out, the dry hull gives you the confidence to span

waves without sacrificing stability. And the Full Team Deck concept is a nimble core angler platform, yet large enough for team anglers to work side-by-side. You may choose between the more popular Legacy hull or the new Hybrid 203 hull, at your preference. Every aspect of this model has a reason, no matter how simple. In the world of competitive team angling, simple things make the difference in winning.



NEW

LENGTH 20 ft 4 in
BEAM 94 in
HULL WEIGHT 1840 lbs
FUEL CAPACITY 52 gal
H.P. RANGE 200-300



1 Full Team Deck

The FTD layout enhances tackle and rod organization needed for both solo and competitive team events.

2 Fiberglass Step Box

Durable step/storage box with grab handle, cup holders, step pad and a second cooler underneath.

3 Power-Pole Access

Dedicated Power-Pole pump access area on both sides of the triangular livewells. Drop-in storage trays on top to hold accessories.

4 Bow Configuration



Updated bow with adjustable pedal position, voltage gauge and trim/nav lights rocker switches.

5 Cougar FTD Console



New console designed to accommodate twin graphs without restricting visibility.

6 Styling Updates



Billet aluminium accents throughout the boat and lighted acrylic handrails.

CHOICE OF THE PROS

This Cougar FTD is new for 2021. We've made one of our most popular boats even better, keeping that Tour angler in mind. The center storage allows you to access your gear without moving your deck rods. The console continues those updates to better accommodate larger single or dual graphs. Rear storage access is improved, and the rear deck has dedicated twin doors to program those Power Pole pumps with ease. Over those are twin drop in

bait trays. And storage exists under the touted Wave Crusher bucket seats and dual cockpit coolers. Storage is organized as every square inch of this boat was carefully planned to enhance your ability to compete. It's nimble as it comes with the dry riding Legacy Bass Cat 20' hull, select anglers will choose the new Hybrid 203 hull also available. Our Cougar FTD has been a solid performer and will continue to make its mark as a Tier 1 choice.

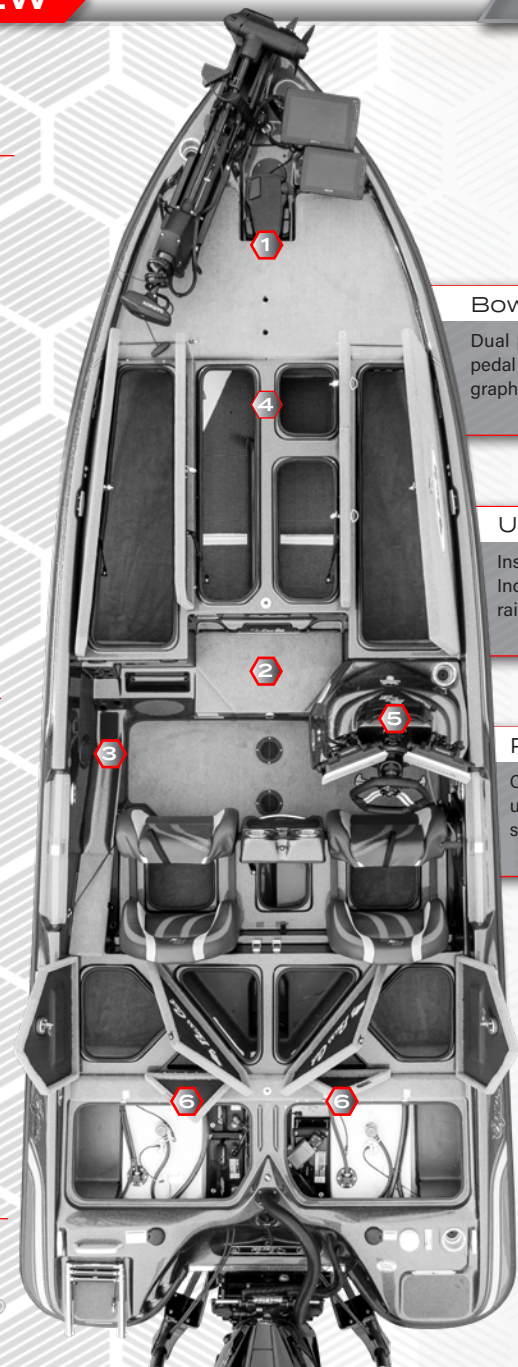
Storage Length (with | without) Tongue Swing
23'2" | 26'1"

EYRA

NEW

LENGTH 20 ft 2 in
BEAM 94 in
HULL WEIGHT 1740 lbs
FUEL CAPACITY 52 gal
H.P. RANGE 200-300

Storage Length (with | without) Tongue Swing
22'11" | 25'10"



1 Bow Adjustability

Dual pedestal bases, adjustable pedal tray and room for multiple graph configurations.

2 Updated Cooler

Insulated cooler in the deck step. Increased storage capacity with raised sandwich tray.

3 Passenger Storage

Co-angle storage that protects and holds up to six (6) rods with an additional storage box and under-seat storage.

4 Coffin Lid Configuration



Front deck utilizes industry-first center coffin storage for optimal efficiency and accessibility for many angler styles.

5 Eyra Cockpit Updates



Updated console for single or dual graph configurations. Increased cockpit feel for both driver and passenger.

6 Rear Storage/Access



Power-Pole pump access compartment hidden by a removable storage tray. Accessible from the updated rear boxes.



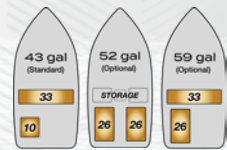
A BASS MASTERPIECE

Eyra owners are passionate about their boats. It is more than just a work of art in the style department. The beauty of this model lies in its capabilities on plane. The hyper-responsive hull senses your throttle, trim and steering gestures as you encounter on water conditions. Anglers appreciate what this hull is capable of after they've enjoyed those hours behind the wheel. A muscle car look and feel exudes, as the Eyra boasts a layout to compliment

the most efficient angler. The coffin storage in the center is now copied and is flanked by large rod/tackle storages. You and your partners will stay fluid all day long. The enhanced refinements on the 2021.5 model allows for easy access to Power-Pole pumps, while increasing storage access over the previous version. If you desire a high-performance ride with effortless control while fishing, the Eyra is what you want and more.

Caracal

LENGTH 19 ft 8 in
 BEAM 96 in
 HULL WEIGHT 1760 lbs
 FUEL CAPACITY 43 gal*
 H.P. RANGE 200-225



*Caracal Fuel Options

Adjustable Stance

Two seat pedestal bases and an adjustable recessed pedal tray allowing you to fine-tune your fishing stance.

Central Storages

LED lighted, vented central rod and tackle storage. Access your gear without shifting deck rods.

Passenger Rod Locker

Dedicated rod locker / walking ramp to conceal rods to 8' inside with room for five(5) more strapped to the top.

Front Day Box



Dedicated day box for easy access to the day's necessities.

Net/Tool/Ruler Storage



Convenient net, tool and ruler storage area just outside of the port rod box.

Starboard Rear Deck Box



Drop-in compartment, provides immediate access to Power-Pole pumps or other accessories.



A WIDE THROWBACK

The Caracal name is a throwback to the 17 foot hot rod version that dominated in on water performance at the 1990's Top 100 Tour. The heritage of the name is preserved in this wide-bodied hull, and it draws a new base to the name. Accolades have adorned it with comments from owners enjoying it. Features include the side insert net scabbard in the port deck, tool and ruler slots, tandem (2) aft storages, port and

off-center line rod storage, and even a rod locker for your partner. A day use box is back at the front like those early 1990's Caracal II models. The massive triangle livewells of the Premium Series lineup populate the rear deck, along with a large starboard storage box. The stability at rest is exceptional for that tippy test. On the run, this model has joined the wide-body concepts that continue to evolve.

Storage Length (with / without) Tongue Swing
 23' / 25'9"

Pantera II

LENGTH 19 ft 1 in
BEAM 93 in
HULL WEIGHT 1425 lbs
FUEL CAPACITY 33 gal
H.P. RANGE 135-200



Deck Storage

Twin central boxes for tackle with easy access at all times.

Deck Step / Cooler

Large front deck step that opens to a cooler. A built-in sandwich tray keeps your food away from wet ice in the main compartment.

Port Rod Storage

Tube rod organizer that holds rods to 8' in length. Additional rods can be stored in the rod shelf below, as well as the starboard locker.

Bow Pedal Tray



Stay on point with the forward-focused recessed trolling motor pedal tray.

Ruler Storage



Ruler storage under the all-fiberglass console.

Passenger Rod Storage



Co-angler rod stay to protect up to 5 rods while running.



SET THE PACE

The Pantera II is the most manufactured boat model in bass fishing. Introduced in 1988, they were sold as they unloaded from the trucks, while holding a waiting list not rivaled today. Little has changed in the hull frame for good reason. This is one of the most efficient, driest and quickest boats on the market, not just this segment. Updates, redesigns and refinements have been made since its introduction, and the Pantera II

still shines as a hometown competitive boat. Dual rod lockers sit outwards of two storages and the raised deck sets the tone on most any water out there. Serious competitors once preferred it around the world. Add the option of 43 gallons of fuel feeding a 200 HP engine, it gives this model a range to reach most any tournament water. The Pantera II sets the pace while hanging with other brands running larger engines.

Storage Length (with | without) Tongue Swing
22' | 24' 4"

LENGTH 18 ft 1 in
BEAM 93 in
HULL WEIGHT 1380 lbs
FUEL CAPACITY 33 gal
H.P. RANGE 115-175



Bow Pedal Tray

Recessed foot pedal tray on point. One of the most efficient and maneuverable platforms in bass fishing.

Front Deck Storage

Twin central storage boxes capable of holding enough gear for even the most well-equipped team on tournament day.

Rear Deck Storage

Port/starboard boxes on the rear deck for additional gear on either side of the divided livewell.

Recessed Reel Pocket



A built-in reel pocket helps give your reels enough clearance from the trolling motor.

Sabre FTD Console



All-fiberglass console with custom 6X steering wheel and digital switch panel.

Livewell System



Divided livewell with spray bars, pump-in/pump-out and recirculation.



SMALL FOOTPRINT. BIG PERFORMANCE.

The Sabre FTD is a perfect example of good things coming in small packages. This model has everything to satisfy even seasoned anglers. A look at the 2021 SP Series will provide performance that fits most any budget. The SP (Special Package) is the choice for an angler seeking a quick and efficient tournament-ready rig. A common theme here is another efficient hull design. Just like other Bass Cat models the Sabre FTD excels at getting the most in

terms of fuel economy and performance. From large lakes to skinny water this 18' model makes a perfect fishing platform for the versatile angler. This one is not an inexpensive starter, it carries the same construction of the Jaguar, as only the *optional Vinyl Ester *AME 6001 resin is different. This boat carries multiple common strengths across the pride and retains them in a smaller footprint. You're gonna' love it in the SP Series.

Pantera

Classic

LENGTH 19 ft 6 in
BEAM 90 in
HULL WEIGHT 1550 lbs
FUEL CAPACITY 30 gal
H.P. RANGE 150-200

Fishing Platform

Beam carries well into the bow giving you over 62" of width at the rear seat base.

Helmet Storage

One of two built-in coolers, conveniently located under the rear deck step box.

Passenger Rod Stay

Room to strap down an additional five(5) rods for your co-angler. Padded to protect your equipment.

Innovative Front Deck Layout



Offset lids to give deck rods sufficient clearance. Access to rods up to 8' in the central rod locker.

Pantera Classic Console



Rigid dash assembly capable of flush mounting 12" displays. Custom switch panel and 6X steering wheel.

Rear Deck Storage



Large rear storages for you and your partner on either side of the divided livewell.



A CLASSIC COMPETITOR

The primary objective of this Pantera Classic model is to achieve a market for starting young anglers and those on the other end of their fishing. The 19'6" hull carries the 90" in a beam forward design of a wider front deck space, while still allowing the rig to fit comfortably into most garages. The streamlined hull design carries itself well powered with a 24-volt trolling motor. Rated for a 200HP engine, the 30-gallons of fuel capacity will allow ample range. Storage onboard the new

Pantera Classic flows nicely from bow to stern. The front deck hosts, a never before designed, inset storage lids and a central 8'6" rod capacity. The design allows anglers access to their outer storages without having to move rods on the deck. Added to that, the under seat and large rear storage units accommodate a full tournament load for you and your partner. The Pantera Classic cracks the door to anglers demanding a wide beam feel in a value-conscious package.

Storage Length (with | without) Tongue Swing
22'7" | 25'2"

Margay

LENGTH 17 ft 7 in
BEAM 90 in
HULL WEIGHT 1310 lbs
FUEL CAPACITY 26 gal
H.P. RANGE 70-150

Margay Bow

Wide stance up front with a recessed pedal tray, trim switches and a cup holder.

Front Storage Boxes

Room for all of your gear with partitions to keep things in place.

Margay Cockpit

Room for the tallest angler. Comfortable seats with bench storage and legroom to spare.

Rod / Tackle Center Box



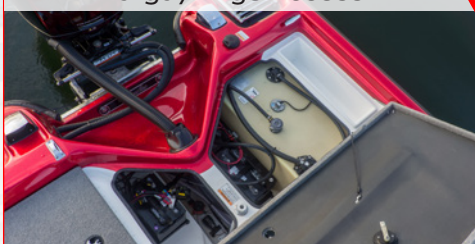
Oversized central rod/tackle storage box to hold everything you may need for the day.

All-Fiberglass Console



Durable, all-fiberglass console with digital switch pad and custom BCB 6X wheel.

Margay Bilge Access



Easy access to the bilge area thanks to the large, fold-flat/removable rear lid.

HANDLE ANY TASK

We built the Margay with a price tag and construction technique no other competitor can touch. The innovative design features a huge center rod locker. Ten rods can rest above a tackle storage area, and outwards are two smaller storages for your choice of other items. The rear deck is large. It offers storage for your partner, as well as a tool

tray for you to stow gear. It gives a soft ride in a big bodied boat. The hull has some neat tweaks to allow engines from 70 hp to the top end 150 four strokes. Just take your pick and price them accordingly to fit your budget. The Margay will handle any task with ease and give you the safety, ride and function at a price others work hard to beat.

Storage Length (with | without) Tongue Swing
20'8" | 23'3"

BCB CUSTOM TRAILERS

Built For The Miles Ahead



We take our trailers very seriously. Unlike many manufacturers, we build Bass Cat trailers one at a time. Custom fit to the specific hull design of each model. Every cross member and support is jigged, fitted, and welded using U.S. Steel to exact tolerances.

Your safety and the investment you have made in your boat are not taken for granted. We demand the highest quality materials and hand craftsmanship for safety and security on the road. It's more than a boat purchase, it's a trailer purchase too!

KEY FEATURES

TRAILER STEP SYSTEM WITH GRAB POST

S-Bend grab post and custom offset fiberglass tongue step for easy access to/from the front deck.

HEAVY DUTY WINCH POST

Rock solid canted winch post design. Extra thick dual roller frame for years of trouble-free loading.

DOUBLE WALL LASER CUT SWING TONGUE

Absolutely the strongest swing tongue made. Secured by a twin pin design for maximum strength and long-term durability.

PPG PROTECTION

All trailers receive a PPG urethane clear coat. This provides a heavy rubberized, protective clear coating which helps repel harmful impacts from rocks and other road debris.

TORQUEFLEX TORSION AXLES

Axles are jigged and welded in a pattern weld to assure minimal tire wear from caster to camber. Our Torqueflex torsion axles provide a true "Soft Ride Suspension".





TRAILER FEATURES



BOAT FEATURES

WHEEL OPTIONS



18" Bass Sport - Silver



18" Bass Sport - Black



15" Prowler



15" Stalker



15" Rogue

FEATURES / ACCESSORIES



TorqueFlex Suspension



LED Lighting Throughout



Spare Tire Cover



HD Swing Tongue



BCB Puddle Light

TRAILER OPTIONS

◇ = Optional ◆ = Standard NA = Not Available

	PREMIUM	ADVANTAGE	VISION 4"	VISION 3"
4" C - Channel Frame - US Steel	◆	◆	◆	◆
3" C - Channel Frame - US Steel	◆	◆	◆	◆
Tandem Axle (Sabre FTD & Pantera II on Single Axle)	◆	◆	◆	◆
Single Axle	NA	NA	◆	◆
Fiberglass Fenders	◆	◆	◆	◆
PPG Urethane Clear Coat (1)	◆	◆	◆	◆
Additional PPG Urethane Clear Coat	◆	◆	◆	◆
IMCO Ratchet Tie Downs	◆	◆	◆	◆
TorqueFlex Axle System - Torsion	◆	◆	◆	◆
Spring Axle System	NA	NA	NA	◆
Welded To Fit Construction	◆	◆	◆	◆
Fulton XLT Pivot Jack (Standard on Jaguar)	◆	◆	◆	◆
Disc Brakes - One Axle	◆	◆	◆	◆
Disc Brakes - Both Axles	◆	◆	◆	◆
LED Light	◆	◆	◆	◆
Back-Up Light (Standard on Jaguar)	◆	◆	◆	◆
Additional Back-Up Light	◆	◆	◆	◆
Aluminum Frame Exchange	◆	◆	◆	◆
Double Wall - Laser Cut Pivot Tongue	◆	◆	◆	NA
Fulton Molded Pivot Tongue	NA	NA	NA	◆
DOT 5 Brake Fluid	◆	◆	◆	◆
Fiberglass Trailer Step	◆	◆	◆	◆
BCB S-Bend Grab Post and Step System	◆	◆	◆	◆

TRAILER WHEEL OPTIONS

18" BCB Bass Sport Wheel (Gloss Black or Silver)	◇	◇	◇	◇
18" BCB Custom Sport Wheel Spare	NA	NA	NA	NA
15" Prowler Wheels & RWL Radials	◇	◇	◇	NA
15" Stalker Wheels & Blk Walls	◇	◇	◇	NA
15" Rogue Wheels with RWL Walls	◇	◇	◇	NA
15" Rogue Wheels with Blk Walls	◆	◆	◆	NA
14" Aluminum Wheels with Blk Walls	NA	NA	NA	◆
Spare Tire Cover (Standard with 18" Bass Sports)	◇	◇	◇	◇
Spare Hub - Non Brake Hub	◇	◇	◇	◇

CUSTOM BOAT COVERS

Sunbrella Supreme Cover - Strapless	◇	◇	NA	NA
BCB Tuff Skinz Engine Cover	◇	◇	NA	NA
Sunbrella Power Pole Sleeve	◇	◇	◇	◇
Aqualon Cover - Strapless	◇	◇	◇	◇

Parts and accessories in stock at our online store. Visit BassCatStore.com to order parts or call us at 870-481-5135

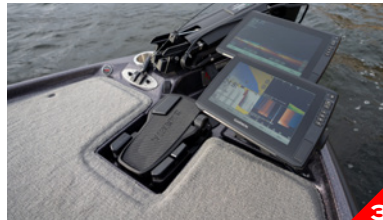
OPTIONS / ACCESSORIES



1



2



3



4



5



6



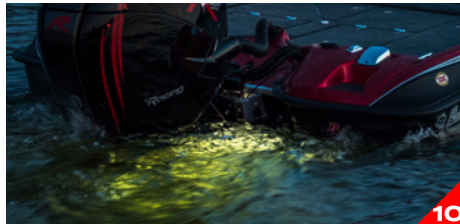
7



8



9



10



11



12

1. Keel Protection 2. Sound System 3. Padded Front Deck 4. Dual Display BalZout Mount 5. Ventilation System 6. Digital Voltage Gauge
7. Wave Crusher Seats (Premium Models) 8. Fiberglass Step Box 9. Lighted Livewells 10. Wake/Safety Light 11. Cockpit Puddle Light 12. Digital Switch Panel

A large selection of factory options allowing you to customize your new rig to fit your needs. Comfort, protection and style options gives you ability to build the boat of your dreams.

At Bass Cat, we do our best to provide the options that give you the custom look and feel you're after. From a huge selection of boat colors, vinyl colors and styles, as well as accessories to compliment your rig.

Enjoy our online boat building tool to get your dream in motion. Visit BassCat.com today, your dream starts here!

See page 34 for list of options/accessories.



YOUR DREAM STARTS HERE



► Online Dream Builder at BassCat.com

CUSTOM COVERS



Our custom travel covers offer a glove-like fit to protect your investment. Strapless design with dual ratchets secure the cover under the rub rail. Simple, one-person on/off with key abrasion point protection built-in to ensure long term durability.

◆ = Optional ◆ = Standard NC = No Charge NA = Not Available
 Chart reflects packaged boat options & accessories

[illegible][illegible]

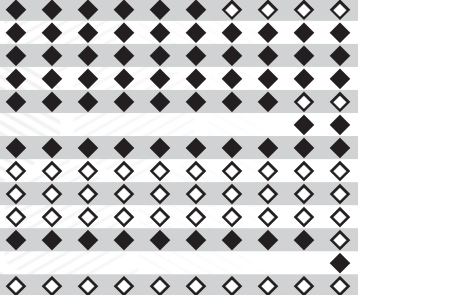
18" Golden Rule	◆	◆	◆	◆	◆	◆	◆	◆	◆	◆	◆	◆	◆
Aeration, Pump In/Out & Recirculation Feature	◆	◆	◆	◆	◆	◆	◆	◆	◆	◆	◆	◆	◆
Bow Day Box	◆	◆	◆	◆	◆	◆	◆	◆	NA	NA	NA	NA	NA
Dip Net Scabbard	◆	◆	◆	◆	◆	◆	◆	◆	NA	NA	NA	NA	NA
Dual Rod Straps - Bass Cat	◆	◆	◆	◆	◆	◆	◆	◆	◆	◆	◆	◆	◆
Foot Control Insert	◆	◆	◆	◆	◆	◆	◆	◆	NA	NA	NA	NA	NA
Livewell Lights	◆	◆	◆	◆	◆	◆	◆	◆	◆	◆	◆	◆	◆
One Rod Bungee - Bow - *Premium Models Use BCB Rod Straps	◆	◆	◆	◆	◆	◆	◆	◆	◆	◆	◆	◆	◆
Rod Box(s)	3	2	2	2	2	2	2	2	2	1	1	1	1
Tool Holder	◆	◆	◆	◆	◆	◆	◆	◆	NA	NA	NA	NA	NA
In-Line Livewell Pump Filter	◆	◆	◆	◆	◆	◆	◆	◆	◆	◆	◆	◆	◆
Nightstalker UV Kit - Added 2 Lights Up To 6 Per Side	◆	◆	◆	◆	◆	◆	◆	◆	◆	◆	◆	◆	◆
Nightstalker Package 6 UV Lights LED	◆	◆	◆	◆	◆	◆	◆	◆	◆	◆	◆	◆	◆
Hydrowave Installed At Bow	◆	◆	◆	◆	◆	◆	◆	◆	1	◆	1	1	1
Rod Organizer	2	1	1	1	1	2	1	1	1	1	1	1	1
Bass Cat Livewell Logo Lids	◆	◆	◆	◆	◆	◆	◆	◆	NA	NA	NA	NA	NA

◆ = Optional ◆ = Standard NC = No Charge NA = Not Available
 Chart reflects packaged boat options & accessories

[illegible][illegible]

Bass Cat makes every effort to ensure accuracy in the options and accessories of these models. We reserve the right to alter options and features based on vendor changes and model evolutions throughout the model year.

GUAN
INX
/MAH
DUGAN
RA
RAC
INTE
BRE
INTE
MARGA

[illegible]

» **Your choice of custom color**

» **Serious performance that m**

» **Color-matched 3" custom B**

» **Mercury 175 Pro XS Four Str**

» **Bass Cat Transferable Lifeti**

SP STANDARD FE

» Humminbird Helix 7 CHIRP MDI

» (2) Humminbird Helix 7 GPS/(1)M

» Dual BalZout Console Mounts

» LakeMaster Regional Card

» Keel Guard

» ProMariner 3-Bank Charger

- » **Your choice of custom colors, loaded with proven accessories**
- » **Serious performance that meets most any budget**
- » **Color-matched 3" custom Bass Cat dual axle trailer**
- » **Mercury 175 Pro XS Four Stroke** (other engine options available)
- » **Bass Cat Transferable Lifetime Hull Warranty**

» Humminbird Helix 7 CHIRP MDI	» 45" Minn Kota Ultrex 80lb iPilot
» (2) Humminbird Helix 7 GPS/(1)MSI	» Med. RAM Mount - Bow
» Dual BalZout Console Mounts	» SS Boarding Ladder
» LakeMaster Regional Card	» R&R Manual Jackplate
» Keel Guard	» Padded Front Deck
» ProMariner 3-Bank Charger	» Interactive Digital Switch Panel
» Tilt Helm w/Teleflex Steering	» Marine Town SS Latches
» Mercury Monitor Gauge	» Free QUEST Rewards Membership



**2021 Sabre FTD SP comes standard with the Mercury 175 Pro XS® Four Stroke.
Other engine options available. See dealer for details.**



PII SPECIAL PACKAGE

PANTERA II SP

- » Your choice of custom colors, loaded with proven accessories
- » One of the most iconic bass boat hulls of all time
- » Color-matched 3" custom Bass Cat dual axle trailer
- » Mercury 200 Pro XS Four Stroke (other engine options available)
- » Bass Cat Transferable Lifetime Hull Warranty
- » 43gal fuel capacity

SP STANDARD FEATURES

- » Humminbird Helix 7 CHIRP MDI
- » (2) Humminbird Helix 7 GPS/(1)MSI
- » Dual BalZout Console Mounts
- » LakeMaster Regional Card
- » Keel Guard
- » ProMariner 3-Bank Charger
- » Tilt Helm w/Teleflex Steering
- » Mercury Monitor Gauge
- » 45" Minn Kota Ultrex 80lb iPilot
- » Med. RAM Mount - Bow
- » SS Boarding Ladder
- » R&R Manual Jackplate
- » Padded Front Deck
- » Interactive Digital Switch Panel
- » Marine Town SS Latches
- » Free QUEST Rewards Membership



2021 Pantera II SP comes standard with the Mercury 200 Pro XS® Four Stroke. Other engine options available. See dealer for details.



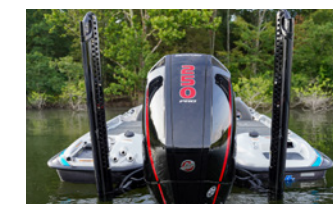
PUMA FTD SPECIAL PACKAGE

PUMA FTD SP

- » Your choice of custom colors, loaded with proven accessories
- » Competition ready FTD (Full Team Deck) design and layout
- » Tour proven 20'4" hull - 94" beam - 36gal fuel capacity
- » Color-matched 4" custom Bass Cat dual axle trailer
- » Mercury 250 Pro XS Four Stroke (other engine options available)
- » Bass Cat Transferable Lifetime Hull Warranty

SP STANDARD FEATURES

- » Humminbird Helix 9 MEGA DI
- » Helix 9 CHIRP MEGA SI
- » LakeMaster Regional Card
- » Padded Front Deck
- » Keel Guard
- » Minn Kota 3-Bank Charger
- » (2) Black 8' Power Poles
- » Tilt Helm w/Teleflex Steering
- » 45" Minn Kota Ultrex 80lb iPilot
- » SS Boarding Ladder
- » R&R Manual Jackplate
- » Security System
- » Lighted Boxes
- » Lighted Livewells
- » Interactive Digital Switch Panel
- » Free QUEST Rewards Membership



2021 Puma FTD SP comes standard with Mercury 250 Pro XS® Four Stroke. Other engine options available. See dealer for details.



GOING BOLDY WITH BASS CAT SINCE 1971

As boats and outboards evolve, one thing remains steady. That is our strong partnership with Mercury Marine that spans decades back to 1971. We've worked together, reaching performance milestones every step of the way.

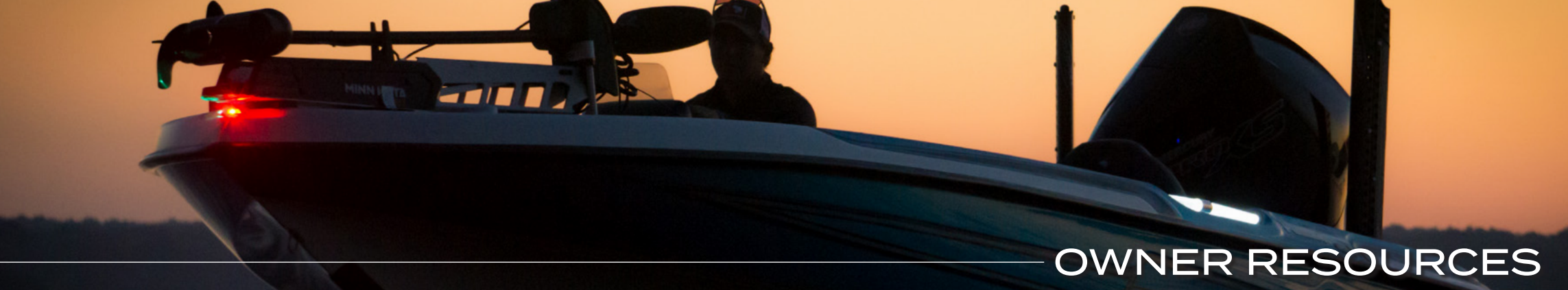
Every Bass Cat hull is optimized to unleash the power of your choosing and our strong dealer network is there to help guide you to the boat of your dreams.

To learn more about Mercury Marine and the all new Pro XS Four Stroke technology visit MercuryMarine.com today.

PUMA & COUGAR 203 HYBRID

- » NEW 203-inspired running surface
- » Available in both Puma & Cougar FTD interiors
- » Similar rough water abilities as the legacy hull
- » Transferable Lifetime Hull Warranty





OWNER RESOURCES

PARTS, CLOTHING & ACCESSORIES

Our parts store is here to serve you regardless of your boat's age. We pride ourselves in maintaining a broad selection of parts for your brand new ride or restoration project. Give us a call and let us help you.



MILITARY ALLOWANCE

In appreciation of customers who serve, Bass Cat would like to extend a military allowance towards the purchase of a new Bass Cat to the following:

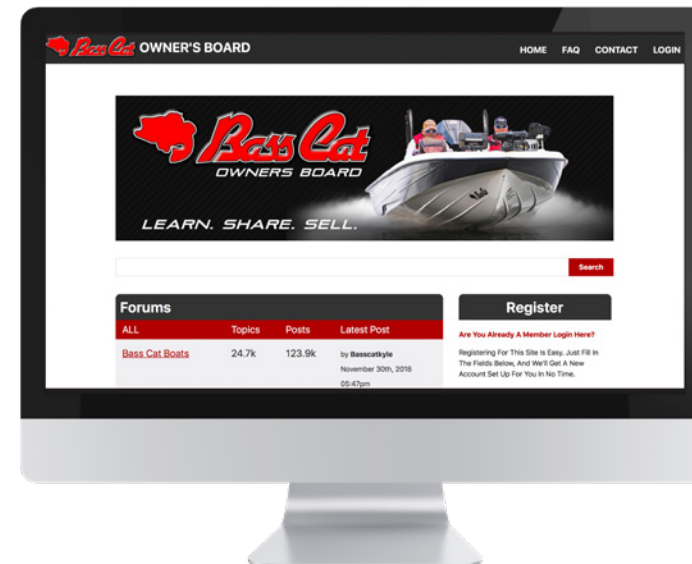
- Active military (CAC verification required)
- Retired military (CAC verification required)



BASS CAT OWNERS BOARD

Welcome to one of the largest online boating communities in the world! The BCB Owners Board is the place to be for bass boat questions and conversations. Communicate with thousands of loyal members and factory personnel.

- Bass Cat FAQ Headquarters
- Honest community input
- Interact with factory personnel
- Performance tips and know how
- Industry updates and overviews



Register today at BassCat.com/forum

Find us on:

Facebook | Instagram | Twitter | YouTube | LinkedIn



EVENTS & EVENT PARTNERS

34th BASS CAT OWNERS INVITATIONAL



RESCHEDULED (Date TBD) • LAKE NORFORK, AR

Over 150% Payback - Family Friendly - Wild Card Prizes - Meet Our Pros

The 2021 Owners Invitational is set for a return to Norfolk! It's open to all Bass Cat owners and once again, we have some great prizes in store. One lucky Grand Prize drawing winner will be going home with a Mercury powered Premium

model Bass Cat, outfitted with Humminbird/ MinnKota accessories. It's our way of saying thanks to all of you for being part of our family. This will be our 50th anniversary and we look forward to seeing you all in October!

WE PROUDLY SUPPORT THE FOLLOWING ORGANIZATIONS



More info at BassCat.com > Events



BASS CAT TRANSFERABLE LIFETIME WARRANTY

Bass Cat Boats warrants each new fiberglass boat to its original noncommercial purchaser for a two-year period. Warranted to be free from defects in the workmanship and materials, under normal use and conditions. Certain items are under coverage by the manufacturer(s), separate of Bass Cat manufactured goods. Bass Cat makes no claim to represent, circumvent or exercise the independent manufacturer(s) warranties.

This warranty is valid in the United States and does not apply to (1) Any boat which shall have been repaired or altered in any way so as to affect its use and operation; (2) gelcoat cracking, crazing, blistering, fading, discoloring or any similar situation; (3) windshield breakage; (4) any boat which has been subject to misuse, alteration, neglect, accident, used for racing purposes or operated in a negligent manner at the opinion of Bass Cat boats; (5) upholstery damage; (6) any boat utilizing over an 8" jackplate (2009) or altering of standard equipment offered specifically by Bass Cat; (7) any boat which has been overpowered, according to the maximum recommended engine horsepower specified for that particular model, on the capacity plate. (8) any part or component expired within a reasonable time of its expected operational period.

To validate the warranty, the boat registration card must be returned to Bass Cat Boats within fifteen (15) days of the original purchase. Under USA Federal law all boat manufacturers are required to notify first purchasers, in the event that any defect is discovered "which creates a substantial risk of personal injury to the public," or any noncompliance with Federal regulations by the manufacturer. Failure by any first purchaser to fill out and return the warranty registration card, or complete transfer, may make it impossible for Bass Cat Boats to give direct notice to such purchaser and does not execute warranty.

This warranty is expressly in lieu of all other warranties, express or implied, including any implied warranty of merchantability or fitness for a particular purpose, and in lieu of all other obligations or liabilities on the part of Bass Cat Boats. Bass Cat Boats expressly denies, on the part of any person to incur or assume for it, any other liability in connection with the sale or use of its boats and trailers. Implied warranties, if any, given by valid law, shall be limited to the duration of this written warranty.

The obligation of Bass Cat Boats, under this warranty, shall be limited to the repair or replacement of any part which is judged defective by Bass Cat. During the term of this warranty repairs will be made free of charge, at any authorized Bass Cat service center under guidelines excepted by Bass Cat, or by Bass Cat itself at its discretion and approval. Transportation costs to the factory are the responsibility of the purchaser. All warranty repairs must be approved by Bass Cat personnel, whose decisions are final. Removal of components which are termed rigging parts will not be the responsibility of Bass Cat Boats. Bass Cat Boats will not be liable for haul-out, launching, towing or storage charges, inconvenience or loss of time or income, or any other special or consequential damages of any kind or nature.

Bass Cat Boats accepts no liability for those components which are or may be marketed to the retail consumer and selected as standard or optional equipment on a Bass Cat Boat. Examples of those components may be and are not limited to, outboard engines, propellers, fish finding equipment, instruments, trolling motors, battery chargers, engine controls and

ignition switches, batteries, radio/stereos, bow guards, and covers.

An extended Lifetime Warranty also applies. These are transferable warranties through an authorized Bass Cat dealer or through Bass Cat Boats. There is a charge for transferring the warranty and it may be transferred only under the guidelines issued at that time period. Transfer is only complete upon receipt by Bass Cat, qualification, fees and transfer.

Extended lifetime warranty to the original consumer is transferable on used boats which are sold through an authorized Bass Cat dealership and/or pass an applicable qualifications check list for that particular model. There is a charge for verification and transfer. Lifetime warranty covers manufacturers defects in the structure in its original state. Any modifications, additions or changes to the boat from its original manufactured condition may be judged invalid for transfer. Under those conditions only the fees for transfer will be redeemed. Qualification fees will be deemed as a service performed.

Assessments of the Lifetime Warranty will be executed base prorating dependent on the age and condition of the boat, using NADA, ABOS, or similar accepted value booklets available at that time.

Bass Cat warrants all Bass Cat trailers for a period of two (2) years, for noncommercial use under guidelines stated in this limited warranty. No exceptions or other offers apply. Tires and certain other items may be subject to their own independent warranty restrictions and available only through those company(s) dealers, agents or representatives. Transfer is applicable under transfer guidelines in this written warranty.

The information in this literature is based upon the latest product information available at the time of publication approval. Bass Cat Boats reserves the right to make changes anytime, without notice, in colors, equipment, specifications, materials, hulls, prices, and discontinuation of models. When changes are made, we reserve the right to do so without incurring the obligations to equip, or modify, existing models built prior to the date of such changes.

Bass Cat Boats • PO Drawer 1688, Mountain Home, AR 72654
870.481.5135 • brochures@basscat.com • BassCat.com